
THE PROFESSIONAL ROOFER'S TOOL GUIDE

- 
- ✓ FLAT
 - ✓ PITCHED
 - ✓ INDUSTRIAL
 - ✓ DRAINAGE
 - ✓ ACCESSORIES

ISSUE 2

SIG ROOFING

www.sigroofing.co.uk

ROOFING TOOLS & ACCESSORIES



CONTENTS

ROOFING DRAINS, VENTS AND ACCESSORIES	6
SPECIALIST ROOFING ITEMS	15
SLATING & TILING TOOLS	17
LEAD TOOLS & ANCILLARIES	22
FIBREGLASS TOOLS	25
HEATING TORCHES	28
HAND TOOLS	37
BITUMEN & ASPHALT MELTING	45
BRUSHWARE & ROLLERS	50
CONTRACTORS EQUIPMENT	53
WORKWEAR	58
PAVING & DECKING SUPPORTS AND WALKWAY TILES	61

THE **SIG** ROOFING DIFFERENCE

As a leading distributor of specialist roofing related products, expertise and support, we're proud to offer our customers an extensive range of tools and accessories:

**SPEND MORE
SAVE MORE**

**BULK DISCOUNTS
ALWAYS AVAILABLE**

**FANTASTIC
EVERYDAY VALUE**

✓ **COMPREHENSIVE RANGE
OF PROFESSIONAL TOOLS**

✓ **BESPOKE TOOLS FOR
FLAT, PITCHED &
INDUSTRIAL ROOFING**

✓ **FULL RANGE OF PPE,
WORKWEAR & BOOTS**

✓ **LEADING BRANDS**

✓ **FULLY COMPLIANT**

✓ **CONSUMABLES AND
REFILLS IN STOCK**

✓ **COMPETITIVE PRICES**



ALL YOUR ROOFING NEEDS UNDER **ONE ROOF**

Your local SIG Roofing team are both passionate and knowledgeable. We're here to help you procure the right products:

✓ **SPECIALIST IN PITCHED, FLAT AND INDUSTRIAL ROOFING PRODUCTS**

✓ **EXCELLENT TRADING RELATIONSHIPS WITH ALL THE LEADING MANUFACTURERS**

✓ **OVER 180 DELIVERY VEHICLES ENSURING RELIABLE DELIVERIES**

✓ **EXPERT ADVICE AND SUPPORT**

✓ **DEPOTS NATIONWIDE**



SUPPORTING CONTRACTORS



ONE WARRANTY

The ONE Warranty scheme is a free to use warranty for the complete build-up of your roofing projects.

- 15 year product warranty scheme
- Covers all the products in a complete roof build up
- One stop warranty shop
- Suitable for flat & pitched roof build ups

TRADE CLUB

As a member of Trade Club you get points when you purchase your roofing products and earn rewards every month.

- Collect 1 point for every £1 you spend
- Earn double points on specified products
- Spend your vouchers in branch



WANT TO KNOW MORE? PLEASE VISIT THE WEBSITE FOR ADDITIONAL INFORMATION, REGISTRATION AND DOWNLOADS ON ALL THESE SERVICES.

Our policy of continuous product improvement means that the style/colour or manufacturer of delivered product may differ from that illustrated.

ROOF DRAIN 'FIBREGLASS'

eternoivica

Available in five diameters 50-75-82-90-100mm. The liquid vertical exit drain includes a fibreglass mesh for bonding, particularly with water based liquid waterproofing materials. The polypropylene flange is designed with a knurled surface on both sides to improve adhesion of liquid waterproofing materials. Small steps on the upper part of the spigot allows upper infiltration water to be captured and drip away.

ADVANTAGES:

- Wide choice: Five diameters 50-75-82-90-100mm.
- Fibreglass mesh for bonding, works well with water based liquid waterproofing materials.
- Polypropylene flange with two sided knurled surface for strong adhesion of liquid waterproofing materials.
- Small steps on upper spigot allows upper infiltration water capture and drip away.

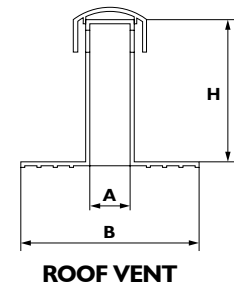
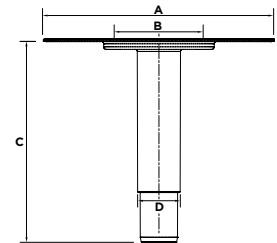
Manufacturer warranties will require their own specific accessories, the use of alternate products must be checked with the warranty supplier before the use of non OEM accessories.

LIQUID STRAIGHT WITH FIBREGLASS MESH

Code	Type	for pipes Ø	A	B	C	D	
10661527	I	STRAIGHT WITH FIBREGLASS MESH	50	230	42.3	200	37
10661528	I	STRAIGHT WITH FIBREGLASS MESH	75	230	70.3	200	66
10661529	I	STRAIGHT WITH FIBREGLASS MESH	82	230	76.1	200	71.8
10661530	I	STRAIGHT WITH FIBREGLASS MESH	90	230	84.8	200	80.5
10661531	I	STRAIGHT WITH FIBREGLASS MESH	100	230	94.1	200	89.8

ROOF VENT

Code	Type	Ø external	A	B	H	
10661615	2	ROOF VENT	75	72	300	270

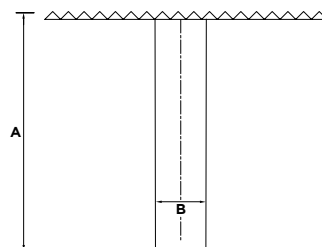


FIBREGLASS PARAPET ROOF DRAIN

Manufactured from seamless GRP tube with chopped strand 900 weight matting bonded to create bonding surface with the roof membrane.

Please note the membrane must be dressed on to the internal diameter of the drain and consolidated into position to ensure 100% bond.

Code	A	B
10661532	500	82
10661533	500	110



Our policy of continuous product improvement means that the style/colour or manufacturer of delivered product may differ from that illustrated.

ROOF DRAIN 'TPE' AND 'EPDM'

eternoivica

TPE (Patented)[®]

- Unique design - circular row of holes for waterproofing membrane to be torched over and blended with the membrane below.
- 2 – 3 couples of anti-infiltration rings.
- Manufactured of special compound of thermoplastic rubber.
- Highly resistant to low temperatures (cold flexibility = -40°C).
- Compatible with all bituminous waterproofing membrane.

EPDM

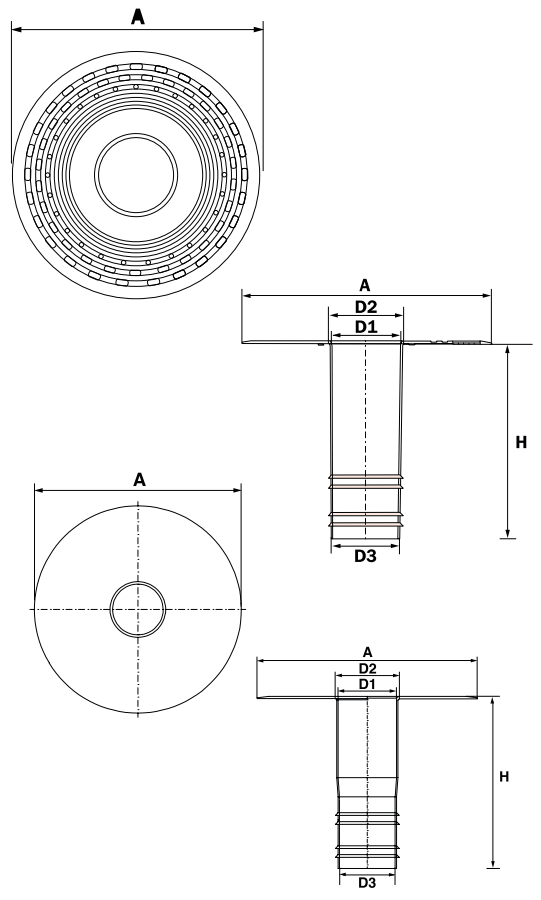
The new TPE roof outlets with a smooth flange have been developed as the ideal solution for the adhesion of synthetic EPDM butyl rubber and similar waterproofing membranes.

Manufacturer warranties will require their own specific accessories, the use of alternate products must be checked with the warranty supplier before the use of non OEM accessories.



ROOF DRAIN H 250mm							
Code		for pipes Ø	A	D1	D2	D3	H
10660612	1	63	320	51	60	49	250
10660613	1	75	320	63	70	62	250
10661534	1	82	320	69	75	68	250
10660611	1	100	320	86	90	85	250
10661535	1	110	380	95	101	94	250
10661536	1	150	380	134	140	132	250

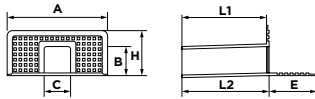
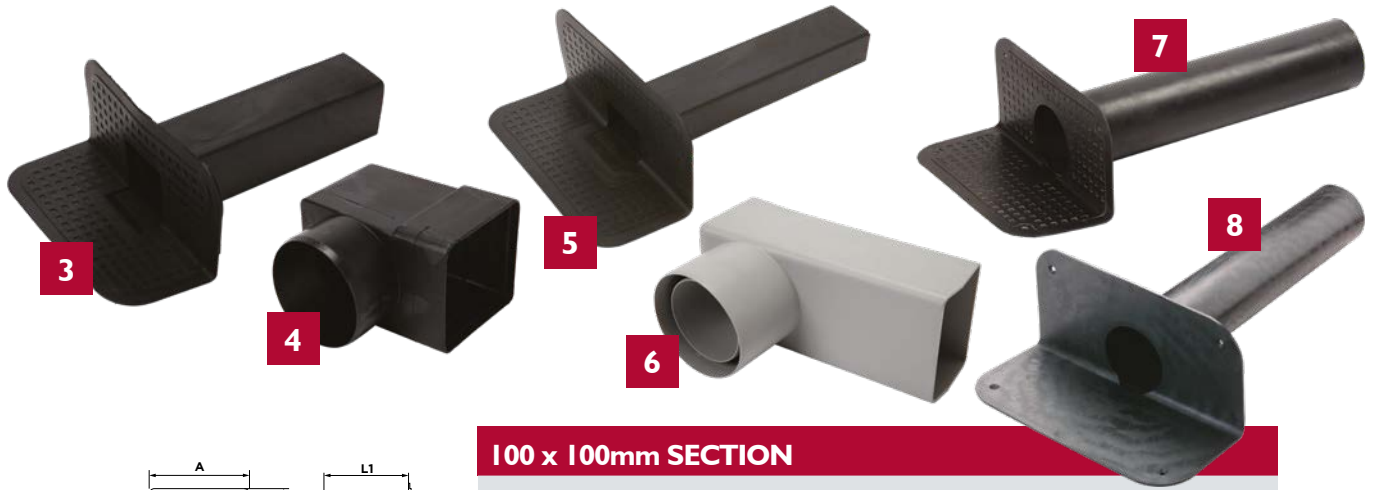
ROOF DRAIN H 400mm EPDM							
Code		for pipes Ø	A	D1	D2	D3	H
10661577	2	63	320	51	60	49	400
10661578	2	75	320	63	70	62	400
10661579	2	82	320	69	75	68	400
10661580	2	100	320	86	90	85	400
10661581	2	110	380	95	101	94	400
10661582	2	150	380	134	140	132	400



Our policy of continuous product improvement means that the style/color or manufacturer of delivered product may differ from that illustrated.

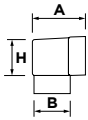
ROOF FITTINGS 'TPE' AND 'EPDM'

eternoivica



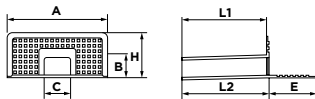
100 x 100mm SECTION

Code	Type	A	B	C	E	H	L1	L2
10661538	3 TPE 90°	340	92	92	145	168	375	375
10661583	3 EPDM 90°	340	92	92	145	168	375	375



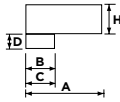
PIPE ADAPTOR 100 x 100mm SECTION

Code	Size	A	B	H
10661539	4 Ø 100	148	96	96



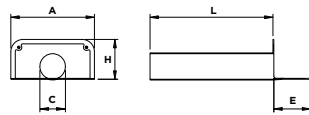
100 x 65mm SECTION

Code	Type	A	B	C	E	H	L1	L2
10661540	5 TPE 90°	340	62	92	145	168	425	424
10661584	5 EPDM 90°	340	62	92	145	168	425	424



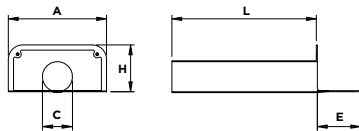
PIPE ADAPTOR 100 x 65mm SECTION

Code	Size	A	B	C	D	H
10661541	6 Ø 80-100	218	80	100	62	65



TPE ANGULAR DRAIN WITH ROUND SPIGOT

Code	for pipes Ø	A	C	E	H	L
10661542	7 63	340	63	150	133	500
10661543	7 75	340	75	150	133	500
10661544	7 80	340	80	150	133	500
10661545	7 90	340	90	150	165	500
10661546	7 110	340	110	150	165	500
10661547	7 125	340	125	150	185	500



EPDM ANGULAR DRAIN WITH ROUND SPIGOT SMOOTH FLANGE

Code	for pipes Ø	A	C	E	H	L
10661585	8 63	340	63	150	133	500
10661586	8 75	340	75	150	133	500
10661587	8 80	340	80	150	133	500
10698955	8 90	340	90	150	165	500
10661588	8 110	340	110	150	165	500
10698793	8 125	340	125	150	185	500

Our policy of continuous product improvement means that the style/color or manufacturer of delivered product may differ from that illustrated.

ROOF DRAIN 'TPE' AND EPDM

eternoivica

ROOFING DRAINS, VENTS AND ACCESSORIES



BASE FITTING FOR PIPES

Code	Type	D	DI	D2	H
10661548	9 TPE PIPE COLLAR	40	175	395	190
10661589	10 EPDM PIPE COLLAR	40	175	395	190

CORNERS

Code	Type	A	B	H
10661550	11 TPE INTERNAL CORNER MEDIUM	95	-	95
10661551	12 TPE EXTERNAL CORNER MEDIUM	93	173	100

SUPPORT FOR LIGHTNING-CONDUCTOR NET

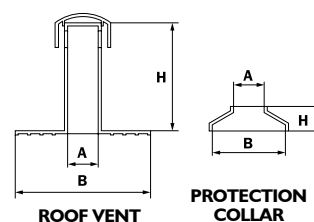
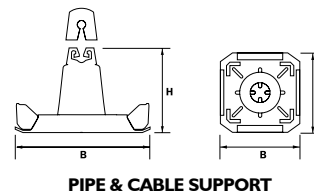
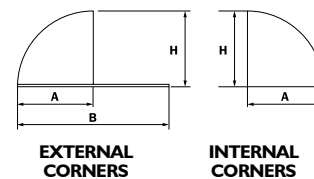
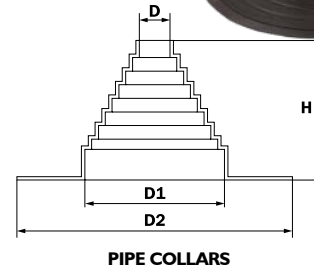
Code	Type	A	B
10661552	13 SUPPORT	15	10
10661553	13 CAP	-	-

ROOF VENTS

Code	Type	∅ external	A	B	H	HI
10661554	14 TPE ROOF VENT	75	72	300	270	-
10698797	15 EPDM ROOF VENT	75	72	300	225	-
10661555	16 PROTECTION COLLAR	-	75	180	60	-

MAXI AND INSULATED ROOF VENTS

Code	Type	∅ external	A	B	H	HI
10661556	17 TPE MAXI ROOF VENT	105	100	300	270	-



Our policy of continuous product improvement means that the style/color or manufacturer of delivered product may differ from that illustrated.

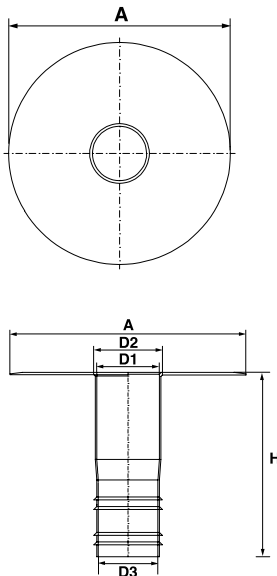
ROOF DRAIN 'PVC'/SINGLE PLY

Manufactured of PVC, it is highly resistant against low temperatures (cold flexibility = -40°C) as well as perfectly compatible with any sort of PVC membrane. The flange is totally smooth for a perfect bonding to the waterproofing sheet. According to the length of 250 or 400mm, the spigot is provided with two or three couples of anti-infiltration rings.

ADVANTAGES:

- Highly resistant to low temperatures (cold flexibility up to -40°C).
- Compatible with all PVC membranes.
- Smooth flange for bonding to waterproofing sheet.
- Spigot with two or three couples of anti-infiltration rings.
- 250mm length.

Manufacturer warranties will require their own specific accessories, the use of alternate products must be checked with the warranty supplier before the use of non OEM accessories.



ROOF DRAIN H 250mm

Code		for pipes Ø	A	D1	D2	D3	H
10661557	I	63	320	51	60	49	250
10661558	I	75	320	63	70	62	250
10661559	I	82	320	69	75	68	250
10661560	I	100	320	86	90	85	250
10661561	I	110	380	95	101	94	250
10661562	I	125	380	109	115	108	250
10661563	I	150	380	134	140	132	250
10661564	I	160	380	140	146	139	250

Our policy of continuous product improvement means that the style/colour or manufacturer of delivered product may differ from that illustrated.



2



3



4



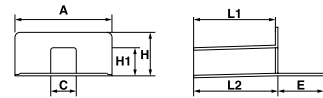
5



6

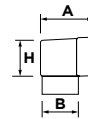
100 x 100mm SECTION

Code	Type	A	C	E	H	HI	LI	L2
10661565	2	45°	340	92	145	168	92	375



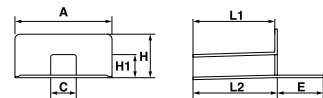
PIPE ADAPTOR 100 x 100mm SECTION

Code	Size	A	B	H
10661539	3	∅ 100	148	96



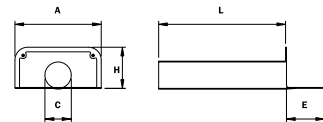
100 x 65mm SECTION

Code	Type	A	C	E	H	HI	LI	L2
10661566	4	90°	340	92	145	168	62	425



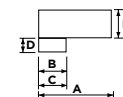
ANGULAR DRAIN WITH ROUND SPIGOT

Code	for pipes ∅	A	C	E	H	L
10661567	5	63	340	63	150	133
10661568	5	75	340	75	150	133
10661569	5	90	340	90	150	165
10661570	5	110	340	110	150	165
10661571	5	125	340	125	150	165



PIPE ADAPTOR 100 x 65mm SECTION

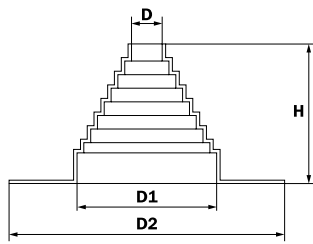
Code	Size	A	B	C	D	H
10661541	6	∅ 80-100	218	80	100	62



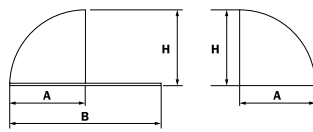
Our policy of continuous product improvement means that the style/colour or manufacturer of delivered product may differ from that illustrated.

ROOF DRAIN 'PVC'

eternoivica

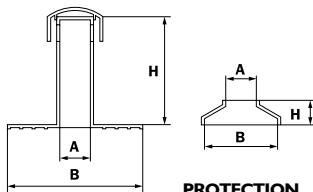


PIPE COLLARS



EXTERNAL CORNERS

INTERNAL CORNERS



ROOF VENT

PROTECTION COLLAR

BASE FITTING FOR PIPES

Code	Type	D	D1	D2	H
10661572	7 PVC PIPE COLLAR	40	175	395	190

CORNERS

Code	Type	A	B	H
10661573	8 INTERNAL CORNER MINI	70	-	70
10661574	9 EXTERNAL CORNER MINI	67	128	70

ROOF VENTS

Code	Type	∅ external	A	B	H	HI
10661575	10 ROOF VENT	75	72	300	225	-
10661576	11 MAXI ROOF VENT	105	100	300	270	-
10661555	12 PROTECTION COLLAR	-	75	180	60	-

Our policy of continuous product improvement means that the style/colour or manufacturer of delivered product may differ from that illustrated.

ROOF DRAIN 'TPO'

eternoivica

Manufactured of universal polyolefine white, they are made to guarantee a perfect compatibility to any sort of TPO waterproofing membrane. The flange is totally smooth for a perfect bonding to the waterproofing membrane. The spigot is provided with two couples of anti-infiltration rings.

ADVANTAGES:

- Manufactured of 100% universal polyolefine white.
- Guaranteed compatibility with TPO waterproofing membranes.
- Smooth flange for easy bonding to the waterproofing membrane.
- Spigot made with two couples of anti-infiltration rings.

Manufacturer warranties will require their own specific accessories, the use of alternate products must be checked with the warranty supplier before the use of non OEM accessories.

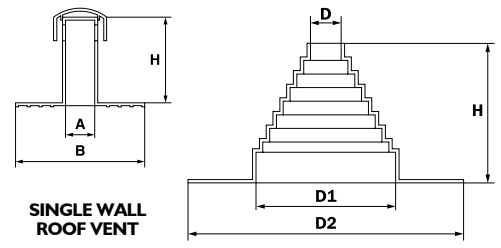
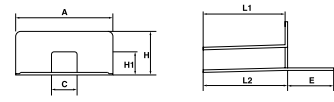
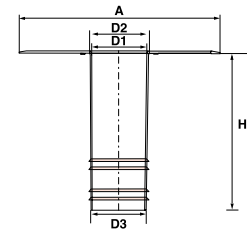
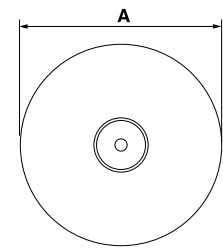


ROOF DRAIN H 250mm							
Code		for pipes Ø	A	D1	D2	D3	H
10661590	I	63	320	51	60	49	250
10661591	I	75	320	63	70	62	250
10661592	I	100	320	86	90	85	250
10661593	I	110	380	95	101	94	250
10661594	I	150	380	134	140	132	250

ANGULAR DRAIN 100 x 65mm SECTION									
Code	Type	A	C	E	H	HI	LI	L2	
10661595	2	90°	340	92	145	168	62	425	425

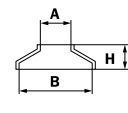
ROOF VENT H 225 - Ø 75mm							
Code	Type	Ø external	A	B	H	HI	
10661596	3 ROOF VENT	75	72	300	225	-	
10661555	4 PROTECTION COLLAR	-	75	180	60	-	

BASE FITTING FOR PIPES						
Code	Type	D	D1	D2	H	
10661597	5 TPO PIPE COLLAR	40	175	395	190	



SINGLE WALL ROOF VENT

PIPE COLLARS



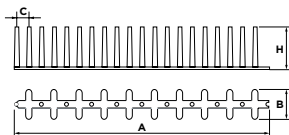
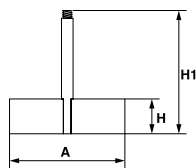
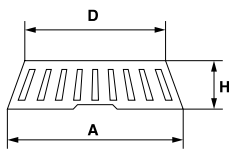
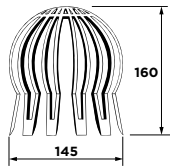
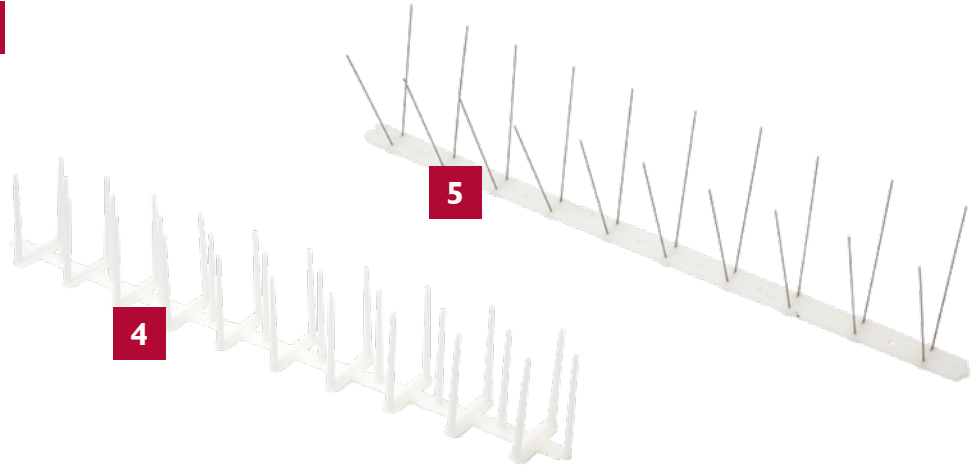
PROTECTION COLLAR

Our policy of continuous product improvement means that the style/color or manufacturer of delivered product may differ from that illustrated.

ROOFING DRAINS, VENTS AND ACCESSORIES

ROOF FITTINGS UNIVERSAL

eternoivica



FLEXIBLE PP LEAF-GUARD

Code	Size	Type
10660598	I 60-140	STANDARD PP

GRAVEL-GUARD

Code	Type	A	D	H
10660567	2 GRAVEL GUARD	195	170	50

UNIVERSAL ADAPTOR

Code	Type	A	H	H1
10660568	3 UNIVERSAL ADAPTOR	130	40	150

PLASTIC BIRD GUARD

Code	Colour	A	B	C	H
10660532	4 WHITE	500	55	25	80

STAINLESS STEEL BIRD SPIKE

Code	Type	A	B	C	H
10660531	5 STANDARD	500	20	50	110

Our policy of continuous product improvement means that the style/colour or manufacturer of delivered product may differ from that illustrated.

MULTI-FUEL BIRDCUARD AND RAINCAP

Multi-fuel birdguard prevents birds, vermin and leaves entering the chimney. This product provides good ventilation and gives protection against wind and rain.

Key Features

Available with bolt or strap fixings
Fits flue sizes 125-250mm internal diameter



Code	Description
10661338	MULTI-FUEL BIRDCUARD AND RAINCAP BOX QUANTITY 6

SPRUNG BIRD GUARD

Sits in the top of the chimney and, once placed, the arms flare out, gripping the inside wall of the pot. This stops large debris and birds getting in. Simple to fit, a long lasting solution.

Key Features

Fits flue sizes 155-225mm internal diameter – spring fit



Code	Description
10661339	SPRUNG BIRD GUARD BOX QUANTITY 10

SPIN COWL

Spin Cowl is a revolving cowl, designed to eradicate draught whilst the rotating action assists ventilation.

Key Features

Fully assembled – ready to fit
Fits pots from 125-250mm diameter
Tested to BS715:1993 and against BSEN 1856
Suitable for flue temperatures up to 200°C
Solves problems of draught whilst the rotating action increases ventilation



Code	Description
10661340	SPIN COWL

FIXED COWL

A static anti-draught cowl. Tested to BS715:1993 and against BSEN 1856 pt2 and hence suitable for all fuel types including gas.

Key Features

Fully assembled – ready to fit – with birdguard
Fits flue sizes 125-250mm internal diameter
Suitable for flue temperatures up to 200°C
Manufactured from 1.6mm test house approved aluminium
Available with stainless steel bolt or strap fixings



Code	Description
10661341	FIXED COWL BOX QUANTITY 8



GALVANISED
STEEL

Code	Description
10661342	300mm x 150mm x 4mm HIP IRON BOX QUANTITY 50
10661343	BABY HIP IRON 200mm x 100mm x 3mm BOX QUANTITY 100

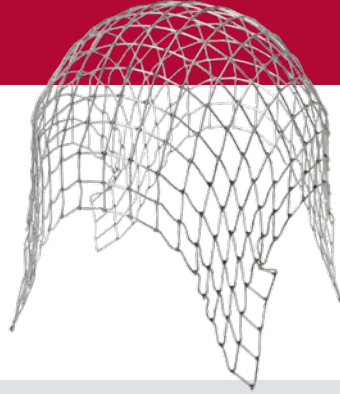


Code	Description
10660638	COPPER SLATE STRAP 150mm x 10mm (PER 10)

Our policy of continuous product improvement means that the style/colour or manufacturer of delivered product may differ from that illustrated.

CHIMNEY GUARD

Chimney guard/leaf guard to prevent debris from entering the chimney pot.



Code	Description
10660534	2.5" CHIMNEY GUARD
10660535	3" CHIMNEY GUARD
10660536	4" CHIMNEY GUARD
10660537	6" CHIMNEY GUARD
10660538	8" CHIMNEY GUARD
10660539	9" CHIMNEY GUARD



Code	Description
10660567	50-195mm GRAVEL GUARD BOX QUANTITY 50
10660568	SPIGOT FOR GRAVEL GUARD 50mm x 195mm BOX QUANTITY 50



Code	Description
10660598	50-150mm LEAF GUARD



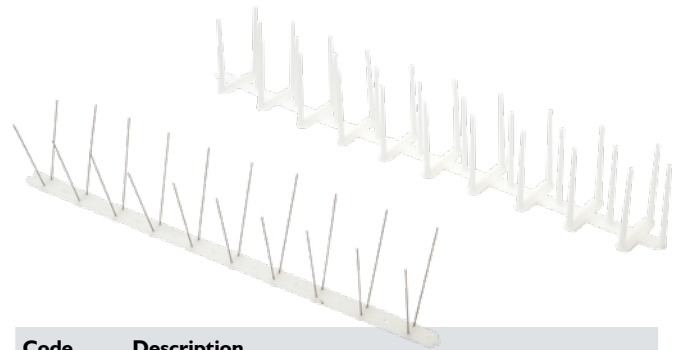
Code	Description
10660595	HALL HOOKS (PKT 10)



Code	Description
10660644	ALLOY VERGE CLIP 18mm x 65mm x 170mm BOX QUANTITY 100



Code	Description
10661344	GUTTER GUARD – BROWN – 6m ROLL 18cm WIDE BOX QUANTITY 12



Code	Description
10660532	BIRD GUARD 500mm PLASTIC
10660531	BIRD GUARD 500mm STAINLESS STEEL

Our policy of continuous product improvement means that the style/colour or manufacturer of delivered product may differ from that illustrated.

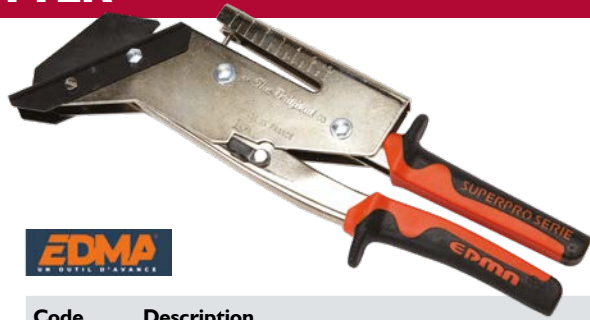
EDMA MAT SLATE & PUNCH CUTTER

The Edma 10660261 Mat Slate & Punch Cutter is a high quality tool for use in cutting and punching roof slate tiles. It features spring loaded handles for power, precision cutting and comes with ergonomic soft grip handles.

Key Features

- Lightweight and compact
- Ideal for cutting punching roof slate tiles
- Single hand compound action
- Soft grip handles
- Replaceable blade and punch

**BEST
SELLER**



Code	Description
10660261	EDMA SLATE CUTTER CW PUNCH
10698823	EDMA SLATE CUTTER CW PUNCH LARGE BLADE

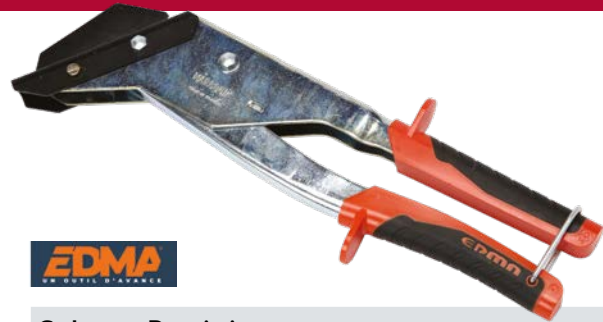
BOX QUANTITY 5

EDMA MAT COUP SLATE CUTTER

The Edma Mat Coup Slate Cutter is a high quality tool for use in cutting roof slate tiles. It features spring loaded handles for power and precision cutting, will cut slate up to 7mm thick and comes with ergonomic soft grip handles.

Key Features

- Lightweight and compact
- Ideal for cutting roof slate tiles
- Single hand compound action
- Cuts up to 7mm thick slates
- Soft grip handles



Code	Description
10660264	EDMA SLATE CUTTER NO PUNCH
10698935	EDMA SLATE CUTTER NO PUNCH LARGE BLADE

BOX QUANTITY 5

EDMA SLATE KIT

Comprises of a large sturdy plastic tool box with a carry handle and range of tools included.

Includes

- 1x Edma slate cutter with punch
- 1x Lead snips
- 1x Chalk line
- 1x Chalk flask
- 1x Utility snips
- 1x Tool box



Code	Description
10661348	EDMA SLATE KIT

Our policy of continuous product improvement means that the style/colour or manufacturer of delivered product may differ from that illustrated.

EDMA PROFESSIONAL ROOFER SET - FLYER & CUTTER

The Edma 10661349 Maxi-Pro Roofer Pack offers a high quality package ideal for professional builders and roofers. The slate cutter features an integrated hold punch and will shape slate, eternit and fibre without any dust or crumbling.

Key Features

- Lightweight and compact
- Ideal for cutting punching roof slate tiles and cutting zinc/PVC
- Single hand compound action
- Soft grip handles
- Long life
- Cuts without any dust or crumbling
- Tinsnip has non-slip serrated blades



Code	Description
10661349	EDMA PROFESSIONAL ROOFER SET – FLYER AND CUTTER



Code	Description
10660419	EDMA MASTERCUT - FOR FIBRE CEMENT – NOT NATURAL SLATE BOX QUANTITY 5



Code	Description
10661430	EDMA-HAMMER TACKER (10/12/14mm STAPLES) BOX QUANTITY 5



Code	Description
10661350	EDMA TOP BLADE



Code	Description
10661737	EDMA DRILLING PUNCH



Code	Description
10661351	EDMA CUTTING DIE



Code	Description
10660262	EDMA REPAIR KIT

Our policy of continuous product improvement means that the style/colour or manufacturer of delivered product may differ from that illustrated.



Code	Description
10660271	BREAK IRON 1 POINT



Code	Description
10660272	SLATERS AXE RIGHT HAND



Code	Description
10660270	BENCH IRON 2 POINT



Code	Description
10660273	SLATERS AXE LEFT HAND



Code	Description
10661352	SLATE CHOPPER 24" CUTTING BLADE



FOR ACCURATELY BEDDING RIDGE TILES

Code	Description
10660617	HIP RUNNERS

EDMA SLATE CUTTERS



EDMA Roll Mat – 600mm Slate Cutter

Key Features

2 different working positions: straight position for ground work and tilted position for roof work.

Easily attached to roof battens thanks to its notches.

Large cutting platform graduated every 10mm.

Square gauges for regular straight and angular cuts.

Cutting trolley guiding on bearings and rubber end stops.

Carrying strap and dust collector included.

For natural and synthetic slates up to 6mm thickness.

Trolley locking system.



Code	Description
10661353	EDMA ROLL MAT – 600mm SLATE CUTTER

EDMA Small Slate Guillotine Machine Key

Key Features

Mounting hook for fixing to a lathe or bench.

Ideal for cutting up to 7mm thick slate tiles.

Lightweight and compact.

210mm capacity.

Highly durable design.

Heavy-duty design.



Code	Description
10660265	EDMA SMALL SLATE GUILLOTINE MACHINE

Our policy of continuous product improvement means that the style/colour or manufacturer of delivered product may differ from that illustrated.

**BEST
SELLER**



Code	Description
10660512	DIMAR DOUBLE TIP SCRIBE BOX QUANTITY 10



Code	Description
10660513	SINGLE TIP SCRIBE



Code	Description
10660528	SLATE RIPPER ECONOMY



Code	Description
10660529	SLATE RIPPER FORGED PRO



Code	Description
10660263	SLATE RIPPER STAINLESS STEEL



**ROOFERS
FAVOURITE**

Code	Description
10660285	UNIVERSAL SLATERS HAMMER



**STEEL
SHAFT**

Code	Description
10660281	SLATERS HAMMER STEEL SHAFT



Code	Description
10660291	ESTWING SLATERS PICK

Our policy of continuous product improvement means that the style/colour or manufacturer of delivered product may differ from that illustrated.

DOUBLE SLATE PUNCHING MACHINE

Heavy duty double hole slate punch machine for slate up to 12mm thick.

Key Features

Fully adjustable
Can be fixed to a work bench



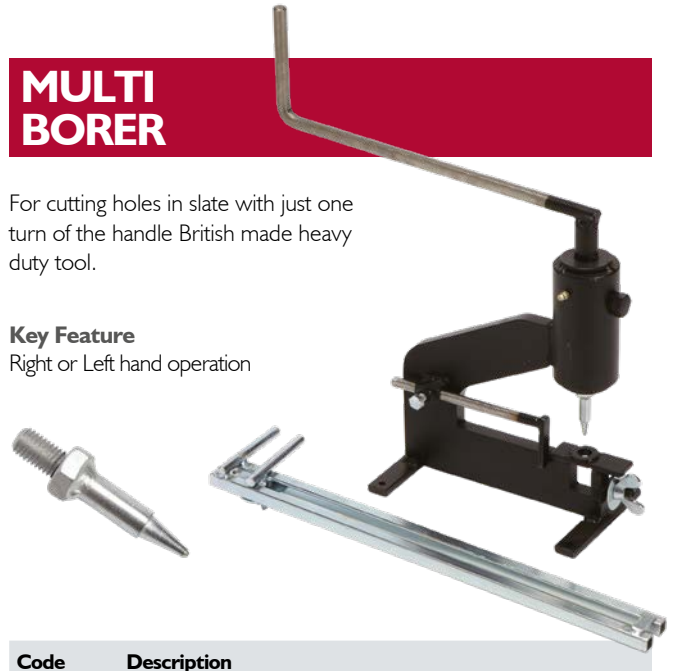
Code	Description
10661738	DOUBLE SLATE PUNCHING MACHINE
10661356	1015 SPARE MACHINE PUNCH

MULTI BORER

For cutting holes in slate with just one turn of the handle British made heavy duty tool.

Key Feature

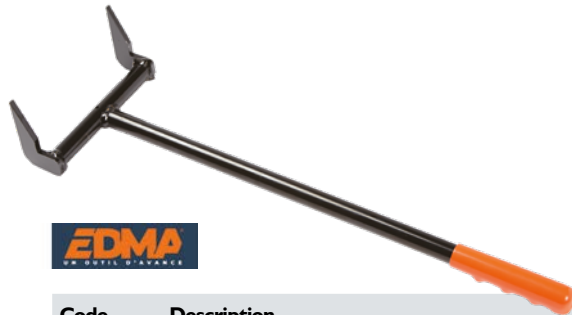
Right or Left hand operation



Code	Description
10661739	MULTI BORER 7mm PUNCH HOLE
10661357	MULTI BORER SPARE PUNCH



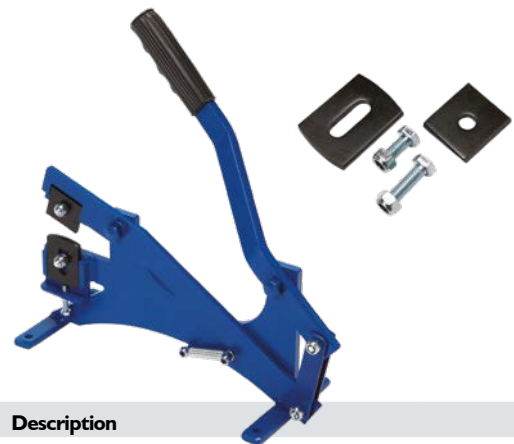
Code	Description
10660530	BATTEN GAUGE



Code	Description
10661358	BATTEN LIFTER



Code	Description
10660284	LONG HANDLED TILE NIBBLER BOX QUANTITY 5



Code	Description
10660282	TILE CROPPER HEAVY DUTY
10660283	CROPPER SPARE BLADES

Our policy of continuous product improvement means that the style/colour or manufacturer of delivered product may differ from that illustrated.

oxyturbo®

OXY TURBO GAS WELDING KIT

The Oxy Turbo 90 Kit is the smallest autogenous welding system available.

It is compact, powerful and allows the end-user to make professional welding being particularly suitable for small roofing works.

The product safety is guaranteed by four flashback arrestors with double protection: one on the pressure reducer, one on the gas tap and two integrated in the handgrip.

Supplied with disposable Gas & Oxygen bottles (spares available separately) and accessories in an elegant space-saving metal trolley.

Compact and highly effective, the weight of the kit is minimal at 5kgs. A practical handle and two blocking devices for bottles make it possible to carry the set everywhere.

Includes

- Valved welding torch with standard nozzle
- Hoses with check valves
- Oxygen and turbo gas regulators
- Stella nozzle set
- Carry frame
- 2 brazing rods
- Goggles
- Spark lighter
- Instructions



Code	Description
10660495	OXY TURBO GAS WELDING KIT BOX QUANTITY 2



Code	Description
10660498	OXY TURBO SPARE NECK TUBE

oxyturbo®



Code	Description
10660496	OXY TURBO OXYGEN REFILL
10660497	OXY TURBO GAS REFILL BOX QUANTITY 12

oxyturbo®



Code	Description
10660494	OXY TURBO HANDSET & HOSE ASSEMBLY



Code	Description
10661359	STELLA NOZZLE SET

Our policy of continuous product improvement means that the style/colour or manufacturer of delivered product may differ from that illustrated.



Code	Description
10661361	ROSE SMALL 60mm
10661362	ROSE MEDIUM 90mm
10661363	ROSE LARGE 100mm



Code	Description
10661360	RIVET HEAD 30mm
10661618	DOME HEAD/DOT 15mm



Code	Description
10660594	HALL CLIPS STANDARD PER 50 BOX QUANTITY 10
10661364	HALL CLIPS LARGE PER 25 BOX QUANTITY 5



Code	Description
10660556	FLASH BAND 10m X 100mm (BOX QTY 6)
10660557	FLASH BAND 10m X 150mm (BOX QTY 4)
10660558	FLASH BAND 10m X 225mm (BOX QTY 2)
10660559	FLASH BAND 10m X 300mm (BOX QTY 2)



Code	Description
10660484	CHASE WEDGE SMALL 50mm
10660485	CHASE WEDGE MEDIUM 58mm
10661367	CHASE WEDGE LARGE 76mm



Code	Description
10660478	BOSSING STICK WOOD



Code	Description
10661366	BENDING STICK WOOD



Code	Description
10660473	SMALL WOOD LEAD DRESSER 48mm
10660474	MEDIUM WOOD LEAD DRESSER 55mm
10660475	LARGE WOOD LEAD DRESSER 60mm

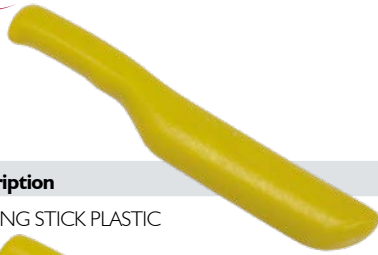


Code	Description
10660488	SETTING STICK WOOD



Code	Description
10660481	BOSSING Mallet SMALL 38mm
10660482	BOSSING Mallet MEDIUM 50mm
10660483	BOSSING Mallet LARGE 58mm

Our policy of continuous product improvement means that the style/colour or manufacturer of delivered product may differ from that illustrated.



Code	Description
10660479	BOSSING STICK PLASTIC



Code	Description
10660479	SETTING STICK PLASTIC



Code	Description
10660499	PLASTIC LEAD DRESSER KIT



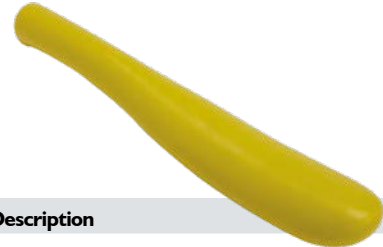
Code	Description
10661378	GILBOW JEWEL SNIP BOX QUANTITY 6



Code	Description
10661379	LEFT H. GILBOW G67 TINSNIP
10661380	RIGHT H. GILBOW G69 TINSNIP BOX QUANTITY 6



Code	Description
10660476	SMALL PLASTIC LEAD DRESSER 52mm
10660477	MEDIUM PLASTIC LEAD DRESSER 55mm
10661368	LARGE PLASTIC LEAD DRESSER 60mm



Code	Description
10660480	BENDING STICK PLASTIC



Code	Description
10660490	PLASTIC CHASE WEDGE



Code	Description
10660492	LEAD BENDER TOOL



Code	Description
10660464	8" GILBOW TINSNIP
10660465	10" GILBOW TINSNIP
10660466	12" GILBOW TINSNIP BOX QUANTITY 6



Code	Description
10660257	S&J EXTRA CUT SNIPS

Our policy of continuous product improvement means that the style/colour or manufacturer of delivered product may differ from that illustrated.



Code	Description
10661369	LEAD WORK SCRAPER



Code	Description
10660491	RUBBER MALLET BOX QUANTITY 6



Code	Description
10660520	MASTER ROOFER LEAD KNIFE BOX QUANTITY 12



Code	Description
10660493	PLASTIC BOSSING MALLET 6"



Code	Description
10660486	MASTER ROOFER 100mm SEAMING PLIER STRAIGHT
10660487	MASTER ROOFER 100mm SEAMING PLIER CRANKED BOX QUANTITY 3



Code	Description
10660463	10" TINSNIPS
10687872	10" ECLIPSE TINSNIPS
10687873	12" ECLIPSE TINSNIPS



Code	Description
10660258	EDMA FLYER METAL SHEAR BLADE 42mm BOX QUANTITY 5



Code	Description
10661370	EDMA FLYER METAL SHEAR BLADE 75mm BOX QUANTITY 5



Code	Description
10660261	EDMA SLATE CUTTER WITH PUNCH BOX QUANTITY 5



Code	Description
10661349	EDMA PROFESSIONAL ROOFER SET – FLYER AND CUTTER 10660261+10661370

Our policy of continuous product improvement means that the style/colour or manufacturer of delivered product may differ from that illustrated.



Code	Description
10660391	SHORT HANDLE 4" ROLLER FRAME BAG QUANTITY OF 6
10660255	4" REFILL BOX QUANTITY 10
10661612	4" REFILL (VELOUR) BOX QUANTITY 10



Code	Description
10660393	LONG HANDLE 4" ROLLER FRAME BAG QUANTITY OF 6
10660255	4" REFILL BOX QUANTITY 10
10661612	4" REFILL (VELOUR) BOX QUANTITY 10



PADDLE ROLLER

Code	Description
10660398	4" CONSOLIDATED ROLLER
10660399	6" CONSOLIDATED ROLLER
10660400	9" CONSOLIDATED ROLLER BOX QUANTITY 12



BUBBLE ROLLER

Code	Description
10660395	4" 'SPLASH FREE' CONSOLIDATED ROLLER
10660396	6" 'SPLASH FREE' CONSOLIDATED ROLLER
10660397	9" 'SPLASH FREE' CONSOLIDATED ROLLER BOX QUANTITY 12



Code	Description
10660401	3" GRP APPLICATION ROLLER C/W FRAME
10660402	6" GRP APPLICATION ROLLER C/W FRAME
10661375	9" GRP APPLICATION ROLLER C/W FRAME BAG QUANTITY 10



Code	Description
10660403	10" STRONG ARM FRAME FOR GRP
10660405	10" GRP SLEEVE STRONG ARM
10698852	10" GRP SLEEVE (VELOUR) FOR STRONG ARM BAG QUANTITY 10



Code	Description
10660293	SURETOUCH GLOVES 100 PER BOX



Code	Description
10660357	2" LAMINATING BRUSH
10660358	3" LAMINATING BRUSH
10660359	4" LAMINATING BRUSH BOX QUANTITY 12

Our policy of continuous product improvement means that the style/colour or manufacturer of delivered product may differ from that illustrated.



Code	Description
10661620	3 PIECE WOODEN MIXER



Code	Description
10660407	POWER WHISK



Code	Description
10660383	12" PAINT SKUTTLE



Code	Description
10661377	GRP MINI SKUTTLE



Code	Description
10661376	MASKING TAPE
10660406	DUCT TAPE



Code	Description
10660425	FFP3 RESPIRATOR

Code	Description
10661374	GRP STARTER KIT

Kit includes:

- Short handle 4" roller frame
- x10 roller refills
- x6 wooden laminating brush
- 6" consolidated roller
- 12" paint skuttle
- Suretouch latex gloves 100 per box
- x3 9" GRP application roller C/W frame



BACK BY
POPULAR
DEMAND

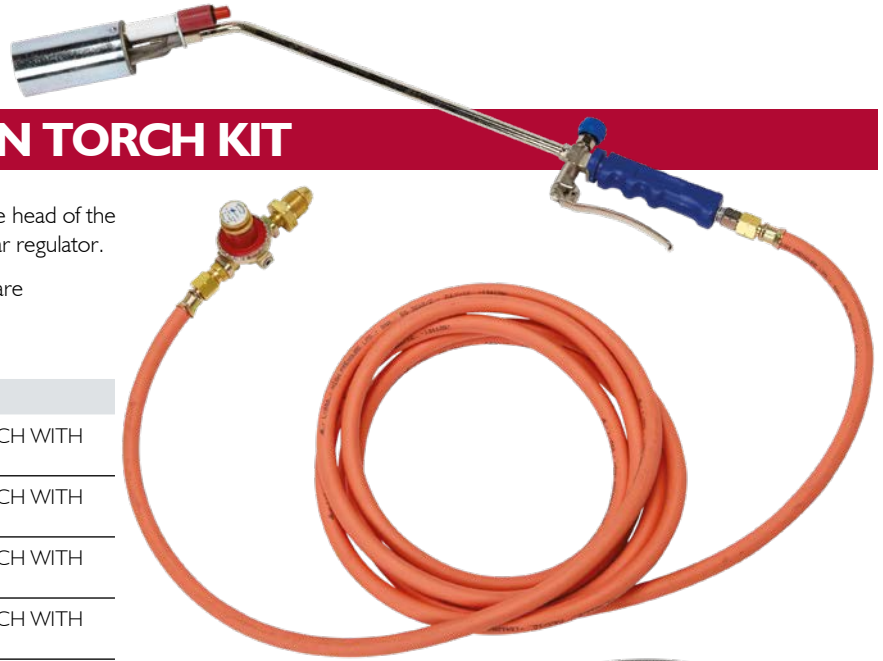
Our policy of continuous product improvement means that the style/colour or manufacturer of delivered product may differ from that illustrated.

TURBO SELF IGNITION TORCH KIT

High quality self-igniting torch, igniter located on the head of the torch, fully adjustable. Includes 5m hose and 0-4 bar regulator.

Please note these are factory assembled and parts are non-interchangeable.

Code	Description
10660550	TURBO SELF IGNITION 180/50 TORCH WITH ACCESSORIES
10660551	TURBO SELF IGNITION 180/50 TORCH WITH ACCESSORIES 10m HOSE
10660552	TURBO SELF IGNITION 380/50 TORCH WITH ACCESSORIES
10660553	TURBO SELF IGNITION 380/50 TORCH WITH ACCESSORIES 10m
10660554	TURBO SELF IGNITION 600/50 TORCH WITH ACCESSORIES
10660555	TURBO SELF IGNITION 600/50 TORCH WITH ACCESSORIES 10m HOSE
10661386	TURBO SELF IGNITION 180/50 TORCH ONLY
10661387	TURBO SELF IGNITION 380/50 TORCH ONLY
10661388	TURBO SELF IGNITION 600/50 TORCH ONLY



IDEAL TORCH KIT

Code	Description
10660596	IDEAL 50 GAS TORCH AND HEAD AND NECK

Code	Description
10660342	5m LENGTH ARMoured HOSE INC CRIMPS AND FITTINGS
10660341	10m LENGTH ARMoured HOSE INC CRIMPS AND FITTINGS



Code	Description
10660340	5M LENGTH 8mm ORANGE HOSE INC CRIMPS AND FITTINGS
10660337	10M LENGTH 8mm ORANGE HOSE INC CRIMPS AND FITTINGS
10660338	15M LENGTH 8mm PROPANE HOSE INC CRIMPS AND FITTINGS
10660259	20M LENGTH 8mm PROPANE HOSE INC CRIMPS AND FITTINGS
10660339	30M LENGTH 8mm PROPANE HOSE INC CRIMPS AND FITTINGS

Our policy of continuous product improvement means that the style/colour or manufacturer of delivered product may differ from that illustrated.

GRÜN

GRÜN TORCH COMPLETE KIT

The handgrip with solid brass workmanship to withstand the workload. The controls give graduated adjustable working flame. Tube manufactured from strengthened, nickel plated, steel pipe. Extra strong screw threads. Unbreakable heads manufactured from refined stainless steel. Includes 5m hose and 0-4 bar regulator.



Code	Description
10661391	GRÜN 200/45 TORCH COMPLETE KIT
10661392	GRÜN 350/45 TORCH COMPLETE KIT
10661393	GRÜN 600/45 TORCH COMPLETE KIT

GRÜN SUPER TURBO DRYER



Code	Description
10661394	GRÜN SUPER TURBO DRYER

GRÜN TORCH ONLY



Code	Description
10661395	GRÜN 200/45 TORCH ONLY
10661396	GRÜN 350/45 TORCH ONLY
10661397	GRÜN 600/45 TORCH ONLY

GRÜN TITANIUM TORCH

Small:
100mm arm.
50mm head/burner.

Large:
500mm arm.
50mm head/burner.

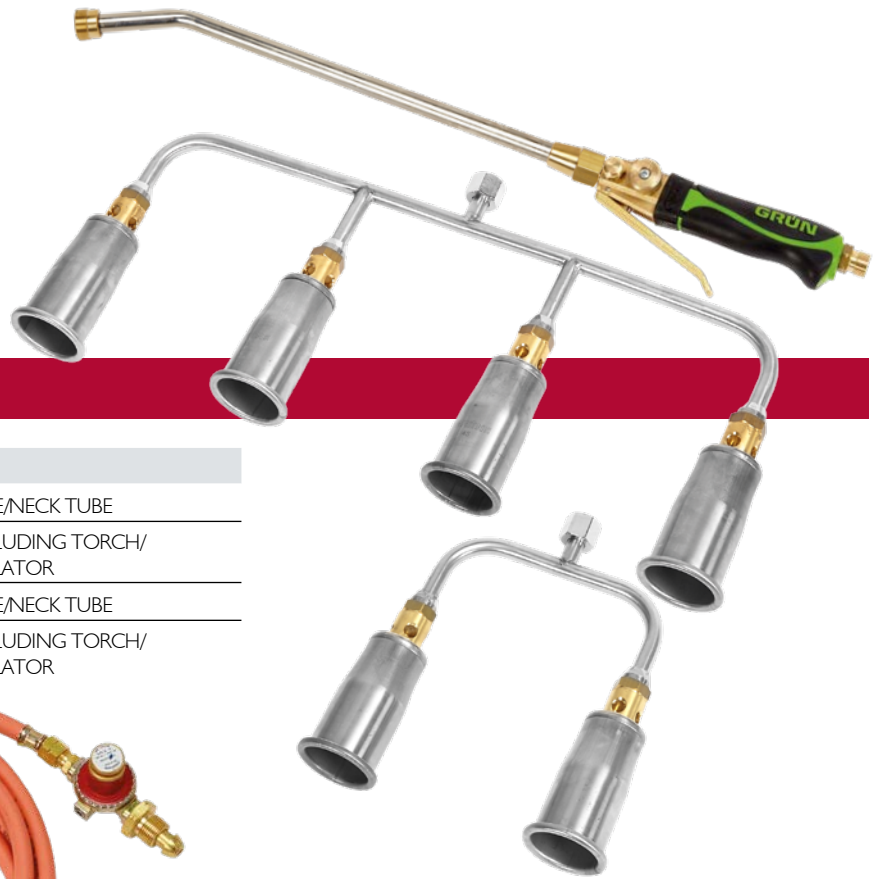


Code	Description
10661398	GRÜN SMALL TITANIUM TORCH
10661399	GRÜN LARGE TITANIUM TORCH

The handgrip with solid brass workmanship to withstand the workload.
The controls give graduated adjustable working flame.
Extra strong screw threads.

Our policy of continuous product improvement means that the style/colour or manufacturer of delivered product may differ from that illustrated.

GRÜN



GRÜN GAS TORCHES

Code	Description
10661400	GRÜN 2 HEADED TORCH/HANDLE/NECK TUBE
10660575	GRÜN 2 HEADED TORCH KIT INCLUDING TORCH/HANDLE/NECK TUBE/HOSE/REGULATOR
10661401	GRÜN 4 HEADED TORCH/HANDLE/NECK TUBE
10660576	GRÜN 4 HEADED TORCH KIT INCLUDING TORCH/HANDLE/NECK TUBE/HOSE/REGULATOR



GRÜN NECK TUBE



Code	Description
10661404	GRÜN 100mm NECK TUBE
10660573	GRÜN 200mm NECK TUBE
10660574	GRÜN 350mm NECK TUBE
10661405	GRÜN 600mm NECK TUBE

GRÜN TORCH HANDLE



Code	Description
10661402	GRÜN TORCH HANDLE
10698830	GRÜN TORCH HANDLE REPAIR KIT

Torch handle made with high quality brass fittings.

GRÜN BURNER HEAD



Code	Description
10698932	GRÜN 35mm BURNER HEAD
10660571	GRÜN 45mm BURNER HEAD
10661403	GRÜN 55mm BURNER HEAD
10660572	GRÜN 65mm BURNER HEAD

BRENNER TWIN HEAD TORCH KIT



Code	Description
10676223	BRENNER 50mm TWIN HEAD TORCH 3m HOSE AND 0.4 BAR REG

Our policy of continuous product improvement means that the style/colour or manufacturer of delivered product may differ from that illustrated.

SIEVERT®

SIEVERT TORCH COMPLETE KIT

A professional and powerful torch kit, ideal for soft soldering, brazing, melting, metalworks, paintstripping and other heating jobs. Includes 5m hose and 0-4 bar regulator.

Code	Description
10661406	SIEVERT DETAIL TORCH COMPLETE KIT
10661407	SIEVERT MEDIUM TORCH COMPLETE KIT
10661408	SIEVERT LARGE TORCH COMPLETE KIT
10661409	SIEVERT DETAIL TORCH
10661410	SIEVERT MEDIUM TORCH
10661411	SIEVERT LARGE TORCH



SIEVERT®



Code	Description
10660592	SIEVERT 180mm NECK TUBE

SIEVERT®



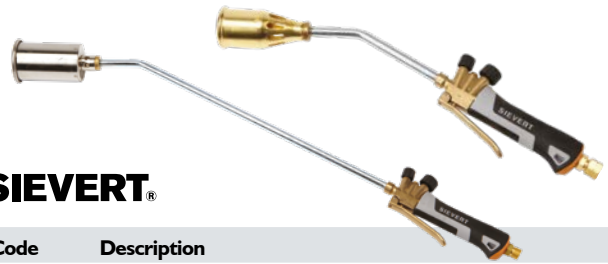
Code	Description
10660593	SIEVERT 350mm NECK TUBE

SIEVERT®



Code	Description
10660591	SIEVERT 500mm NECK TUBE

SIEVERT®



Code	Description
10660584	SIEVERT SMALL TORCH ECONOMY
10660587	SIEVERT LARGE TORCH ECONOMY

SIEVERT®



Code	Description
10660579	SIEVERT 60mm LARGE BURNER

SIEVERT®



Code	Description
10660578	SIEVERT 42mm MEDIUM BURNER

Our policy of continuous product improvement means that the style/colour or manufacturer of delivered product may differ from that illustrated.

SIEVERT®

SIEVERT TORCH COMPLETE KIT ECONOMY

A professional and powerful torch kit, ideal for soft soldering, brazing, melting, metalworks, paintstripping and other heating jobs. Includes 5m hose and 0-4 bar regulator.

Please note these are factory assembled and parts are non-interchangeable.



Code	Description
10660584	SIEVERT SMALL TORCH ECONOMY
10660585	SIEVERT SMALL TORCH COMPLETE KIT ECONOMY
10660586	SIEVERT SMALL TORCH COMPLETE KIT ECONOMY WITH 10m HOSE
10660587	SIEVERT LARGE TORCH ECONOMY
10660588	SIEVERT LARGE TORCH COMPLETE KIT ECONOMY
10660589	SIEVERT LARGE TORCH COMPLETE KIT ECONOMY WITH 10m HOSE



Code	Description
10660345	TORCH STANDS

SIEVERT®



Code	Description
10660590	SIEVERT HANDLE C/W VALVE



Code	Description
10661412	2 PRONG TORCH ADAPTOR



Code	Description
10661413	4 PRONG TORCH ADAPTOR

SIEVERT SAFE2TORCH KIT

Code	Description
10698834	SIEVERT SAFE2TORCH KIT

Includes

- 1x Sievert Promatic handle
- 1x Promatic 600mm neck (60mm burner)
- 1x Promatic 250mm neck (40mm burner)
- 1x Regulator
- 1x 4m hose
- 1x Torch stand
- 1x Tool bag



Our policy of continuous product improvement means that the style/colour or manufacturer of delivered product may differ from that illustrated.



Code	Description
10660346	0-4bar CROWN TOP REGULATOR



Code	Description
10660347	PROPANE FLASHBACK ARRESTOR



Code	Description
10660527	SEAM ROLLER



Code	Description
10661416	EXCESS FLOW VALVE



Code	Description
10660344	NUT AND TAIL



Code	Description
10660343	HOSE CLIPS BOX QUANTITY 10



Code	Description
10660349	PIGTAIL
10660348	T MANIFOLD



Code	Description
10698013	FELT PULLER
10698014	FELT PULLER EXTENDABLE

**NEW
PRODUCT**



Code	Description
10661415	9KG PRESSURE SEAM ROLLER



Code	Description
10660457	TORCH ON ROLLER BAR CW BEARINGS

**BACK BY
POPULAR
DEMAND**

Our policy of continuous product improvement means that the style/colour or manufacturer of delivered product may differ from that illustrated.

GRÜN



Code	Description
10660606	GRÜN QUICK RELEASE HOSE CONNECTOR

EN417 VALVE



Code	Description
10661417	BURNING TORCH COMPLETE KIT



Code	Description
10660565	STEEL SEAM ROLLER RADIUS EDGE



Code	Description
10660566	28mm TEFLON SEAM ROLLER



Code	Description
10660350	FLINT LIGHTER



Code	Description
10660351	SPARE FLINTS PER 10



Code	Description
10660563	SINGLE PLY SEAM TESTING PROBE



Code	Description
10660562	SINGLE PLY PENNY ROLLER 5mm



Code	Description
10660354	HOSE REPAIR KIT

Our policy of continuous product improvement means that the style/colour or manufacturer of delivered product may differ from that illustrated.



Code	Description
10660352	10" ADJUSTABLE SPANNER



Code	Description
10660355	FULLY FORGED GAS SPANNER

WILL FIT ON EXTENDING POLE



Code	Description
10660563	PRO SEAM TESTER RETRACTABLE



Code	Description
10661419	HOT AIR 40mm WELDING NOZZLE
10661420	HOT AIR 40mm ANGLED NOZZLE



Code	Description
10661421	NYLON VEE ROLLER



Code	Description
10661422	HOT AIR 20mm WELDING NOZZLE
10661423	HOT AIR 20mm WELDING NOZZLE



Code	Description
10660635	SILICONE RUBBER SEAM ROLLER



Code	Description
10661424	20mm 90deg ANGLE WELDING NOZZLE



Code	Description
10660564	10" MEMBRANE SHEARS



Code	Description
10661614	DECORATORS SCISSORS

Our policy of continuous product improvement means that the style/colour or manufacturer of delivered product may differ from that illustrated.

LEISTER

LEISTER TRIAC 'AT' HOT AIR GUN

The TRIAC AT is an intelligent hot-air hand tool for welding and shrinking plastics that is suitable for on-site use. It is designed for the needs of even the most demanding professional. Every tool undergoes stringent quality checks prior to leaving the factory in Switzerland. This high-quality hot-air hand tool is equipped for all situations. Its universal areas of application are virtually unlimited. The TRIAC AT will continue to prove its merit in any weather condition and is just as effective outside as it is indoors – all during continuous operation.

- Key Features**
- Suitable for the work site.
 - Closed loop controlled temperature.
 - Open loop controlled air volume.
 - Intelligent «e-Drive» operating unit.
 - Ergonomic handling.
 - Modern design.
 - Swiss made.

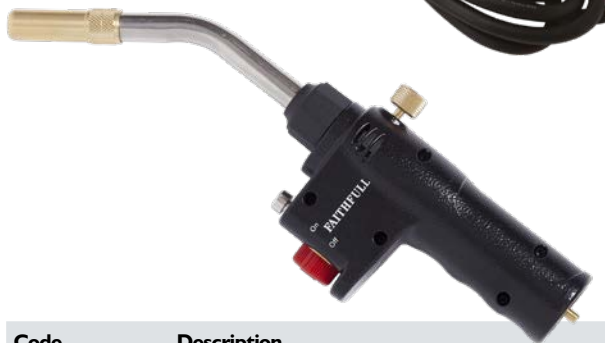
Code	Description
10661426	LEISTER TRIAC "AT" HOT AIR GUN



Code	Description
10661425	REPLACEMENT ELEMENT (AT/ST)



Code	Description
10698837	SIEVERT JET ANTIFLARE BLOW TORCH (NO GAS)
10698838	SIEVERT BUTANE/PROPANE GAS CARTRIDGE EN417 175g



Code	Description
10666443	MAPP QUICK PRO AUTO START POWER TORCH



Code	Description
10660641	TH2000 BLOW LAMP BOX QUANTITY 10
10660642	REFILL BOX QUANTITY 12



Code	Description
10666444	MAPP PROMAX GAS – YELLOW HIGH PERFORMANCE - 1600 °C
10666445	MAPP PROPANE – BLUE

Our policy of continuous product improvement means that the style/colour or manufacturer of delivered product may differ from that illustrated.



Code	Description
10660275	CLAW HAMMER 16oz STEEL SHAFT BOX QUANTITY 6



Code	Description
10660277	CLAW HAMMER FULLY FORGED 20oz BOX QUANTITY 6



Code	Description
10660286	ESTWING CLAW HAMMER 16oz BLUE GRIP
10660289	ESTWING CLAW HAMMER 20oz BLUE GRIP
10661428	ESTWING CLAW HAMMER 24oz BLUE GRIP BOX QUANTITY 2



Code	Description
10660291	ESTWING SLATERS PICK BOX QUANTITY 2



Code	Description
10660287	ESTWING CLAW HAMMER 16oz LEATHER GRIP
10660288	ESTWING CLAW HAMMER 20oz LEATHER GRIP



Code	Description
10660278	CLUB HAMMER 2.5lb BOX QUANTITY 4



Code	Description
10660299	PICK HEAD CHISEL & POINT



Code	Description
10272786	3" BOLSTER CHISEL
10660468	4" BOLSTER CHISEL



Code	Description
10660300	MATTOCK HEAD



Code	Description
10660301	PICK/MATTOCK SHAFT

Our policy of continuous product improvement means that the style/colour or manufacturer of delivered product may differ from that illustrated.



Code	Description
10660469	PLUGGING CHISEL



Code	Description
10660504	COTTON BRICK LINE



Code	Description
10660506	MAXI LINE BOX QUANTITY 12



Code	Description
10661430	EDMA HAMMER TACKER (10/12/14mm STAPLES) BOX QUANTITY 5
10660302	ARROW HT50P HEAVY DUTY HAMMER TACKER BOX QUANTITY 6



Code	Description
10661431	10mm ECO STAPLES PER 1000
10661432	12mm ECO STAPLE PER 1000 BOX QUANTITY 5



Code	Description
10660470	18" WRECKING BAR
10660471	24" WRECKING BAR
10660472	30" WRECKING BAR
10660604	16" UTILITY BAR



Code	Description
10660505	LONGO CHALK LINE (30mtrs) BOX QUANTITY 12



Code	Description
10660508	BLUE CHALK FLASK
10660509	RED CHALK FLASK
10660510	WHITE CHALK FLASK
10661429	FLUORESCENT ORANGE CHALK FLASK BOX QUANTITY 12



Code	Description
10660305	10mm TACWISE STAPLES PER 2000
10660304	12mm TACWISE STAPLES PER 2000 BOX QUANTITY 10



Code	Description
10660507	ROOFER MARKING PENCILS PER 3 BOX QUANTITY 12

Our policy of continuous product improvement means that the style/colour or manufacturer of delivered product may differ from that illustrated.



Code	Description
10660462	7.5m ROOFER TAPE MEASURE HI-VIS BOX QUANTITY 6



Code	Description
10660459	5m ROOFER TAPE MEASURE HI-VIS BOX QUANTITY 12



Code	Description
10661433	STANLEY POCKET TAPE 5m/16ft BOX QUANTITY 2



Code	Description
10660460	1m FOLDING RULE PLASTIC BOX QUANTITY 12



Code	Description
10660461	ROTATING VIAL ANGLE FINDER BOX QUANTITY 6



Code	Description
10660458	24" SPIRIT LEVEL



Code	Description
10660260	FLAT SCREWDRIVER BOX QUANTITY 6



Code	Description
10661434	CROSS DRIVER BOX QUANTITY 6



Code	Description
10660390	GAUGING TROWEL ECONOMY BOX QUANTITY 12



Code	Description
10661435	RST TILING TROWEL

Our policy of continuous product improvement means that the style/colour or manufacturer of delivered product may differ from that illustrated.



Code	Description
10660409	MASTIC TROWEL BOX QUANTITY 12



Code	Description
10661619	BRICK TROWEL ECONOMY BOX QUANTITY 12



Code	Description
10660411	ASPHALT POT TROWEL



Code	Description
10660375	TYZACK GAUGING TROWEL (WHS) BOX QUANTITY 10



Code	Description
10661436	ASPHALT MARGIN TROWEL



Code	Description
10660380	POINTING TROWEL ECONOMY BOX QUANTITY 12



Code	Description
10660410	TYZACK ASPHALT TROWEL



Code	Description
10660521	3" PRO SCRAPER STANDARD
10660522	4" PRO SCRAPER STANDARD
	BOX QUANTITY 6



Code	Description
10660515	R/B TRIMMING KNIFE – ROOFER BOX QUANTITY 12



Code	Description
10660519	FOLDING KNIFE BOX QUANTITY 12

Our policy of continuous product improvement means that the style/colour or manufacturer of delivered product may differ from that illustrated.

STANLEY



Code	Description
10660514	F/B TRIMMING KNIFE – STANLEY BOX QUANTITY 12

STANLEY



Code	Description
10660516	R/B TRIMMING KNIFE – STANLEY BOX QUANTITY 12

STANLEY



FOLDS INTO
COMPACT
SIZE FOR
CONVENIENT
STORAGE

Code	Description
10660523	STANLEY FATMAX FOLDING TWIN-BLADE KNIFE BOX QUANTITY 6

STANLEY



Code	Description
10661437	TITAN KNIFE – STANLEY BOX QUANTITY 12



Code	Description
10661438	FISH TAIL TRIMMING KNIFE BOX QUANTITY 6



Code	Description
10660517	STRAIGHT BLADES PER DISP 10
10661439	STANLEY STRAIGHT BLADES - PER 5 BOX QUANTITY 20

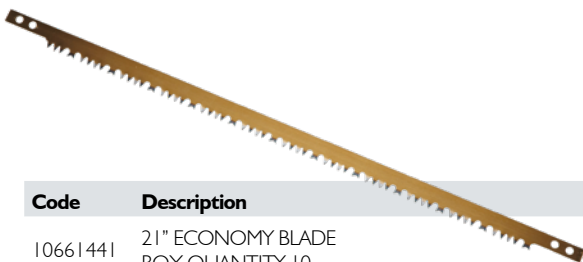


Code	Description
10660518	HOOKED BLADES – PER 10
10661440	STANLEY HOOKED BLADES – PER 5 BOX QUANTITY 20

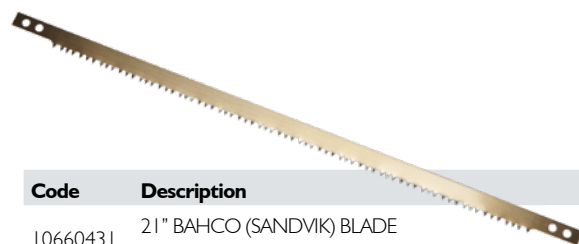


SET CUTTING
DEPTH
PRECISION
FOR CUTTING
EDGES

Code	Description
10661442	PRECISION ROOFING KNIFE
10661443	BOW TIE BLADES - PER 5

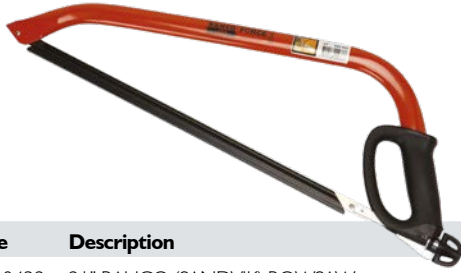


Code	Description
10661441	21" ECONOMY BLADE BOX QUANTITY 10



Code	Description
10660431	21" BAHCO (SANDVIK) BLADE BOX QUANTITY 10

Our policy of continuous product improvement means that the style/colour or manufacturer of delivered product may differ from that illustrated.



Code	Description
10660432	21" BAHCO (SANDVIK) BOWSAW



Code	Description
10660438	21" BOWSAW – ROOFER



Code	Description
10660439	ROOFER HARDPOINT HAND SAW BOX QUANTITY 6



Code	Description
10660434	JACKSAW - PROFESSIONAL HARDPOINT SAW BOX QUANTITY 10



Code	Description
10660435	S&J PREDATOR HAND SAW BOX QUANTITY 10



Code	Description
10660436	S&J 22" PREDATOR HAND SAW FOR UPVC AND FACIA BOX QUANTITY 10



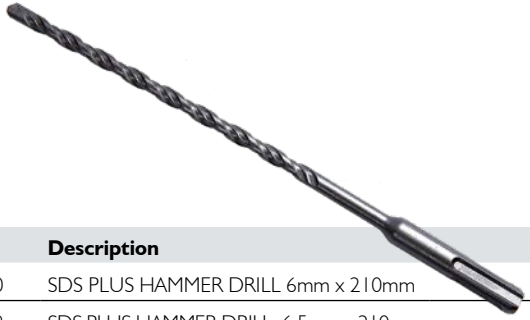
Code	Description
10660437	S&J 22" PREDATOR HAND SAW TRIPLE CUT BOX QUANTITY 10



Code	Description
10660290	4.5" DIAMOND CUTTING DISC
10660418	9" DIAMOND CUTTING DISC BOX QUANTITY 10
10661444	12" DIAMOND CUTTING DISC
10660416	4.5" MORTAR RAKING PREMIUM BLADE
10697998	115mm x 22mm CARBIDE WOOD/PVC CUTTING DISC
10697999	230 x 22 mm CARBIDE WOOD/PVC CUTTING DISC

Code	Description
10660415	FLAT METAL CUTTING DISC 115mm x 22mm
10660413	FLAT METAL CUTTING DISC 230mm x 22mm
10660414	FLAT STONE CUTTING DISC 115mm x 22mm
10660412	FLAT STONE CUTTING DISC 230mm x 22mm

Our policy of continuous product improvement means that the style/colour or manufacturer of delivered product may differ from that illustrated.

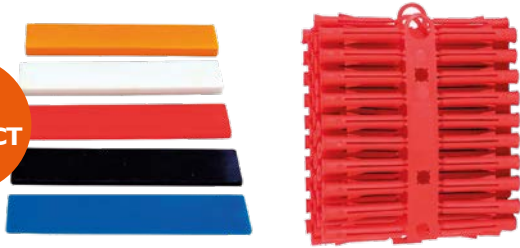


Code	Description
10660630	SDS PLUS HAMMER DRILL 6mm x 210mm
10660628	SDS PLUS HAMMER DRILL 6.5mm x 210mm
10660632	SDS PLUS HAMMER DRILL 7mm x 210mm



Code	Description
10660643	TORX FORGEFIX S2T20 (3 PIECE)

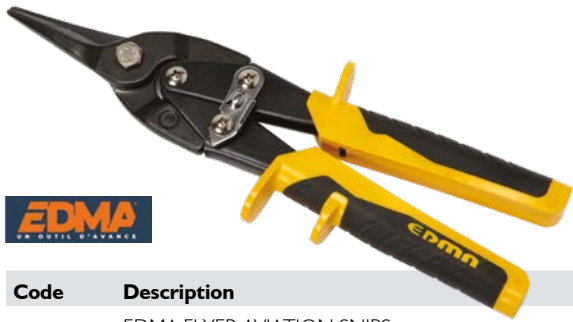
NEW PRODUCT



Code	Description
10660601	PLASTIC PACKERS ASSORTED (5x10 SHIMS 1mm, 2mm, 3mm, 4mm & 5mm)
10661280	RAWL PLUG RED 6mm
10661281	RAWL PLUG BROWN 7mm



Code	Description
10660256	2 STROKE OIL BOX QUANTITY 10



EDMA
BY QUALITY GUARANTEE

Code	Description
10660258	EDMA FLYER AVIATION SNIPS BOX QUANTITY 5



Code	Description
10660463	10" TINSNIPS
10687872	ECLIPSE 10" TINSNIPS BOX QUANTITY 6



Code	Description
10660464	8" GILBOW TINSNIP
10660465	10" GILBOW TINSNIP
10660466	12" GILBOW TINSNIP BOX QUANTITY 6



Code	Description
10661379	LEFT H. GILBOW G67 TINSNIP
10661380	RIGHT H. GILBOW G69 TINSNIP BOX QUANTITY 6

Our policy of continuous product improvement means that the style/colour or manufacturer of delivered product may differ from that illustrated.



Code	Description
10661445	STRAPPING CLIPS PER BOX – 2000



Code	Description
10661446	SEAL APPLY TOOL



Code	Description
10661447	TENSION TOOL



Code	Description
10661448	STRAPPING PER 1500m



Code	Description
10661449	STRAPPING DISP STAND



Code	Description
10661451	ADHESIVE TAPE
10660406	DUCT TAPE
10661376	MASKING TAPE
	BOX QUANTITY 6



Code	Description
10661450	HEAVY DUTY BLACK PALLET WRAP 25 MICRON 250m x 580mm BOX QUANTITY 6



Code	Description
10660600	PALLET WRAP 17 MICRON 300m x 400mm BOX QUANTITY 6

Our policy of continuous product improvement means that the style/colour or manufacturer of delivered product may differ from that illustrated.

ABOUT GRÜN AND GRÜN BOILERS

Grün began business in 1919 with basic bitumen pump boilers to meet the needs of roofers. Grün has since developed a comprehensive range of best in class specialised machinery and devices for flat roof construction, roof renovations and the construction sector. The products use state-of-the-art technology that is practical and user-friendly; of high quality, safe and efficient - allowing craftsmen to work quickly, safely and reliably at all times.

Their aim is to provide contractors with efficient and safe products that reduce costs and keep people safe.

For these reasons we have re-launched our Bitumen Boiler range with these exceptional products.

SAFE RELIABLE EFFICIENT

Grün propane bitumen boilers are the product of years of experience in the manufacture of bitumen boilers. The construction and fitting of the equipment represents the latest technology:

- **Robust design** - built to withstand the rigours of building sites.
- **Heating system** - without internal heating tubes to ensure a high melting capacity using only small amounts of gas.

- **Cost efficiency** - a high degree of firing efficiency and double casing insulation is safe and clean. Both the energy-saving heating technique and the cleanliness of combustion have been confirmed by a State approved testing institution in W. Germany.
- **Modular construction** ensures easy deconstruction without any tools and exchange of parts within boilers of the same size without any problems (also reducing transporting difficulties).

GRÜN BITUMEN BOILER WITH TAP & INSULATION

ADVANTAGES:

- **Unique heating system** provides high melting capacity and efficient gas consumption.
- **Modular construction** enables easy breakdown; boiler part exchange and transport.
- **Rigid construction** and strong, long lasting steelplate for building site use.
- **Even heat distribution** with windshielded vortex beam and row burners.
- **Hand-operated burners** as standard.
- No heating tubes for easy cleaning.
- **30+ gallon capacity** can be fitted with a dial thermometer if required.
- **Automatic control** of thermostatic burner via adjustable valve to regulate gas discharge.



10698824 PRIMAT 150 BOILER

Capacity	approx. 150 ltr (33 gal)
Bitumen through-put	200 ltr (44 gal/h)
Max. propane consumption	approx. max. 2.5kg/h
Operating pressure	1.5 bar
Weight	136kg

10698825 PRIMAT 250 BOILER

Capacity	approx. 250 ltr (55 gal)
Bitumen through-put	300 ltr (66 gal/h)
Max. propane consumption	approx. max. 3.9kg/h
Operating pressure	1.5 bar
Weight	162kg

Code	Description
10698824	33 GALLON PRIMAT 150 BITUMEN BOILER & BURNER
10698825	55 GALLON PRIMAT 250 BITUMEN BOILER & BURNER

Optional thermostatic control unit and hose and regulator separate.

Our policy of continuous product improvement means that the style/colour or manufacturer of delivered product may differ from that illustrated.

GRÜN ROUND BITUMEN BOILER WITH TAP

This round bitumen boiler is an especially sturdy design.

ADVANTAGES:

- **Wind shielded, manually operate propane vortex** beam burner guarantees high melting efficiency.
- **Fitted with Grün automatic thermostatic control** for regulation of the burner (upon request).
- **Automatic temperature control** of the melting material by thermometer built into the control attachment.
- **Further engineering features** include the special exhaust gas chimney, double jacket insulation, and removable tub without internal heating tubes.
- Bitumen is removed with the built-in lockable drain tap.



Code	Description
10698826	119 LITRE/26 GALLON ROUND BITUMEN BOILER WITH BURNER – REKORD 119

Optional thermostatic control unit and hose and regulator separate.

A similarly designed 50 gallon round boiler with throughput of 62 gallon per hour is available – pricing on request – REKORD 229.

10698826 REKORD 119	
Capacity	approx. 119 ltr (26 gal)
Bitumen through-put	180 ltr (40 gal/h)
Max. propane consumption	approx. max. 2.5kg/h
Operating pressure	1.5 bar
Weight	86kg

HAND AND MECHANICAL AGITATING BOILERS

REKORD DIN 119HR, DIN 229HR and DIN 229MR

The DIN 119HR and 229HR special bitumen boilers are supplied with manual agitator incl. flame shield, excl. hose and regulator.

The DIN 229MR special bitumen boiler is supplied with electric motor agitator including flame shield, excluding hose and regulator.

With indirect heating and the agitator, these modified boilers are particularly suitable for polymer bitumen.

CALL US FOR FURTHER INFORMATION AND PRICES

IDEAL FOR POLYMER BITUMEN

REKORD DIN 119HR with manual agitator	
Capacity	approx. 119 ltr (26 gal)
Burner heat output	32 kW
Weight	102kg

REKORD DIN 229HR with manual agitator	
Capacity	approx. 229 ltr (50 gal)
Burner heat output	50 kW
Weight	145kg

REKORD DIN 229MR with electric motor	
Capacity	approx. 229 ltr (50 gal)
Burner heat output	50 kW
Weight	200kg



Our policy of continuous product improvement means that the style/color or manufacturer of delivered product may differ from that illustrated.

GRÜN 4.2 GALLON BUCKET HEATER & BUCKET

GRÜN REKORD 19

High-performance small bitumen boilers with removable bucket.

ADVANTAGES:

- Estimated to run at 100% more efficiency than the older style boilers.
- Heating via a windshielded propane vortex beam burner.
- Construction and fitting comply with the regulations of the German Bau-Berufsgenossenschaft (construction liability insurance).
- Bucket can be easily pulled out and used as a separate bucket and replacements are sold separately.
- Can be used for safe carrying of hot melt liquids with the lid covering the bucket and pouring lid for extra safety.
- The bucket can be locked in place to the boiler base for extra safety.



Code	Description
10698001	19 LITRE/4.2 GALLON SAFETY FIRST BUCKET HEATER & BUCKET (AND BURNER) COMES WITH BURNER
10698005	BUCKET
10698007	BUCKET LID
10698003	BURNER

10698001 REKORD 19	
Capacity	approx. 19 ltr (4.2 gal)
Bitumen through-put	40 ltr (9 gal/h)
Max. propane consumption	approx. max. 0.6kg/h
Operating pressure	1.5 bar
Weight	13kg

GRÜN 11 GALLON BOILER WITH TAP & THERMOMETER

GRÜN REKORD 49

High-performance small bitumen boiler with tap of 11 gallon capacity.

ADVANTAGES:

- Estimated to run at 100% more efficiency than the older style boilers.
- Heated via windshielded propane vortex beam burner.
- Construction and fitting comply with the regulations of the German Bau-Berufsgenossenschaft (construction liability insurance).
- Features include lockable hinged lid, lockable drain cock, double jacket insulation and a dial thermometer for temperature control.
- Many safety features supporting site risk assessment and reduced liability.
- Burners are reliable and not prone to any part or complete replacement
- Tested and certified and comes with operating instructions and product liability cover.



Code	Description
10698008	49 LITRE/11 GALLON BITUMEN BOILER WITH TAP – REKORD 49 (COMES WITH BURNER)
10698009	BURNER FOR REKORD 49

10698008 REKORD 49	
Capacity	approx. 49 ltr (11 gal)
Bitumen through-put	100 ltr (22 gal/h)
Max. propane consumption	approx. max. 0.6kg/h
Operating pressure	1.5 bar
Weight	49kg

Our policy of continuous product improvement means that the style/colour or manufacturer of delivered product may differ from that illustrated.

GRÜN 11 GALLON TILT BOILER GRÜN KIPP 50

A small manageable boiler with lockable lid fits through almost any roof-hole and is excellently suited for repair work and small jobs as well as hot melt work.

ADVANTAGES:

- Estimated to run at 100% more efficiency than the older style boilers.
- **High powered propane** beam burner for rapid heating up period.
- Can be fitted with a dial thermometer for temperature control.
- Bitumen/Hot Melt is poured by tilting the boiler in the tilting frame.
- Many safety features supporting site risk assessment and reduced liability.
- Burners are reliable and not prone to part or complete replacement.
- Tested and certified and comes with operating instructions and product liability cover.



IDEAL FOR VISCOUS HOT MELT

Code	Description
10698827	50 LITRE/11 GALLON TILT BOILER – KIPP 50 (WITHOUT THERMOMETER), COMES WITH BURNER
10698828	50 LITRE/11 GALLON TILT BOILER – KIPP 50 COMES WITH THERMOMETER AND BURNER

10698827 KIPP 50	
Capacity	approx. 50 ltr (11 gal)
Bitumen through-put	100 ltr (22 gal/h)
Max. propane consumption	approx. max. 0.8kg/h
Operating pressure	1.5 bar
Weight	38kg

GRÜN THERMOSTATIC CONTROL UNIT (ONLY 30/50 GALLON)

Automatic thermostatic control that is durable and does not require batteries or mains supply.



Code	Description
10661455	THERMOSTATIC CONTROL UNIT

GRÜN BURNER ONLY

Burner only for use with a GRÜN boiler.



Code	Description
10661456	BURNER FOR THE 33 GALLON PRIMAT 150
10661457	BURNER FOR THE 55 GALLON PRIMAT 250
10698003	BURNER FOR THE 26 GALLON REKORD 119

Our policy of continuous product improvement means that the style/colour or manufacturer of delivered product may differ from that illustrated.

Simple and effective thanks to a highly absorbent foam roller. The DRYING ROLL absorbs moisture over large areas and is ready for the next rolling run without releasing the liquid already absorbed. Its ergonomic shape allows for easy emptying by squeezing the foam.



NEW PRODUCT

Code	Description
10698010	DRYING ROLL
10698012	DRYING ROLL REFILL



Code	Description
10660323	SMALL TAR LADLE
10661467	LARGE TAR LADLE



Code	Description
10661459	IMPACT BOILER BURNER JET UNIT



RE-DESIGNED PRODUCT



NEW PRODUCT

Code	Description
10660324	ASPHALT BUCKET - DESIGNED TO FIT IN THE 10698001 BUCKET HEATER
10698005	GRÜN 19L V LIP BUCKET + LID (INNER BUCKET FOR BUCKET HEATER PAGE 47)

Used for taking the temperature of the bitumen in the pot – simple to use and read.



Code	Description
10661458	BITUMEN TEMPERATURE PROBE



Code	Description
10660455	IMPACT BOILER BURNER



Code	Description
10698831	OVERSPILL TRAY 660mm x 660mm - FOR BITUMEN BOILER UP TO 49 LITRES (NOT SUITABLE FOR KIPP 50)
10698832	OVERSPILL TRAY 1,300mm x 850mm - FOR BITUMEN BOILERS UP TO 150 LITRES
10698833	OVERSPILL TRAY 1,700mm x 1000mm - FOR BITUMEN BOILERS UP TO 250 LITRES

TRAYS ARE GALVANISED WITH HANDLES



Code	Description
10661460	GAS CAGE (4ft x 4ft x 6ft)



Code	Description
10660549	1kg FIRE EXTINGUISHER POWDER
10660548	2kg FIRE EXTINGUISHER POWDER

Our policy of continuous product improvement means that the style/colour or manufacturer of delivered product may differ from that illustrated.



Code	Description
10660376	No 12 COTTON MOP BAG QUANTITY 10



Code	Description
10660377	No 14 COTTON MOP BAG QUANTITY 10



Code	Description
10661461	10" BASSINE BRUSH HEAD BOX QUANTITY 20



Code	Description
10660360	10" COCO BRUSH HEAD BOX QUANTITY 20



Code	Description
10660366	18" BASSINE BRUSH C/W HANDLE
10660364	24" BASSINE BRUSH C/W HANDLE



Code	Description
10660361	12" COCO BRUSH C/W HANDLE
10660362	18" COCO BRUSH C/W HANDLE
10660363	24" COCO BRUSH C/W HANDLE



Code	Description
10661463	36" BASSINE BRUSH C/W HANDLE



Code	Description
10661462	36" COCO BRUSH C/W HANDLE



Code	Description
10660365	BASS YARD BRUSH



Code	Description
10660387	COCO HAND BRUSH
10661661	BASSINE HAND BRUSH

BOX QUANTITY 24

Our policy of continuous product improvement means that the style/colour or manufacturer of delivered product may differ from that illustrated.



Code	Description
10660378	9" 2-ARM ROLLER FRAME
10660379	12" 2-ARM ROLLER FRAME
10660381	9" ROLLER REFILL
10660382	12" ROLLER REFILL



Code	Description
10660369	10" HOT MELT SQUEEGEE
10661464	22" HOT MELT SQUEEGEE



Code	Description
10660386	4 ROW WIRE BRUSH BOX QUANTITY 10



Code	Description
10660367	TURKS HEAD BRUSH



Code	Description
10660385	9" PAINT ROLLER C/W TRAY BOX QUANTITY 12



Code	Description
10660384	9" PAINT ROLLER C/W FRAME BOX QUANTITY 48



Code	Description
10660372	18" WATER DOZER BOX QUANTITY 10



Code	Description
10661465	PAINTBRUSH 1"
10660252	PAINTBRUSH 2"
10660253	PAINTBRUSH 3"
10660254	PAINTBRUSH 4"
	BOX QUANTITY 12



Code	Description
10660370	18" SQUEEGEE C/W HANDLE
10660371	24" SQUEEGEE C/W HANDLE



Code	Description
10660373	4FT-15/16" BRUSH STALES
10660374	4FT-1 1/8 BRUSH STALES
	BULK QUANTITY 25

Our policy of continuous product improvement means that the style/colour or manufacturer of delivered product may differ from that illustrated.



Code	Description
10661741	ROLLER FRAME FLEECE SLEEVE 230mm BOX QUANTITY 12



Code	Description
10661612	4" VELOUR TOPCOAT ROLLER REFILL
10660405	10" GRP SLEEVE (VELOUR) FOR STRONG ARM



Code	Description
10661740	ROLLER FRAME 230 x 45mm



Code	Description
10660394	4" MINI ROLLER & TRAY KIT



Code	Description
10660388	DUST PAN & BRUSH



Code	Description
10660636	JUMBO SPONGE BOX QUANTITY 6



Code	Description
10660356	GORILLA BROOM 500mm C/W SCREW HANDLE AND BUILT IN SCRAPER



Code	Description
10660603	METAL POLE FOR SANDER 1200mm



Code	Description
10660624	DECORATORS ROLLS 115mm x 5m 60 GRIT
10660625	DECORATORS ROLLS 115mm x 5m 80 GRIT
10660623	DECORATORS ROLLS 115mm x 5m 120 GRIT BOX QUANTITY 6

Our policy of continuous product improvement means that the style/colour or manufacturer of delivered product may differ from that illustrated.

ROOFER RIDGE BUCKET

Designed for roofers, this hard-wearing and durable ridge bucket comes with a host of convenient features. The rigid 'V' shaped base to the bucket allows the bucket to sit on the roof ridge without risk of spillage. The heavy duty plastic and metal handle ensures that fully laden buckets are comfortably and safely transported around the roof without accident. A strong hook moulded into the rim of the bucket allows the user to hook the ridge bucket over batten and ladder rungs.



Code	Description
10660329	ROOFER RIDGE BUCKET



Code	Description
10660325	FLEXITUB - 40L
10662697	FLEXITUB - 40L 2PK OFFER



Code	Description
10660330	REAL RUBBER BUCKET



Code	Description
10660326	RUBBER 4 HAND TRUG

Code	Description
10660251	PLASTIC BUCKET
10660331	YELLOW LONG LIFE BUCKET



Code	Description
10660383	12" PAINT SKUTTLE
10661377	GRP MINI SKUTTLE



Code	Description
10660321	LARGE SPOUT POURING CAN
10660320	V LIP BUCKET

Code	Description
10660324	ASPHALT BUCKET - DESIGNED TO FIT IN THE 10698001 BUCKET HEATER
10698005	GRÜN 19L V LIP BUCKET + LID (INNER BUCKET FOR BUCKET HEATER PAGE 47)

Our policy of continuous product improvement means that the style/colour or manufacturer of delivered product may differ from that illustrated.



Code	Description
10661468	PNE WHEELBARROW



Code	Description
10660327	TUFSPOT MIXING TRAY



Code	Description
10660407	POWER WHISK



Code	Description
10661471	ZEBRA TAPE



Code	Description
10661472	10mm COIL ROPE 220m LONG
10661473	6mm COIL ROPE 220m LONG



Code	Description
10661469	ROBUST TUBULAR FRAME, PNEUMATIC ALL TERRAIN WHEELS WITH SEALED BEARINGS. MAX CAPACITY 315kg



Code	Description
10661470	300mm SCRAPER INC HANDLE



Code	Description
10660332	BULLDOG 5SM2AM SHOVEL
10660333	GENERAL PURPOSE SHOVEL O/S
10660334	CARTER ALL STEEL STRIPPING SPADE



Code	Description
10660427	LORRY ROPE 90ft APPROX 10mm DIA



Code	Description
10660428	LORRY ROPE 90ft APPROX 6mm DIA

Our policy of continuous product improvement means that the style/colour or manufacturer of delivered product may differ from that illustrated.



Code	Description
10660620	HEAVY DUTY REFUSE SACKS PER 100



Code	Description
10660426	5.4m x 3.6m TARPULIN PLASTIC
10660429	5.5m x 7.0m TARPULIN PLASTIC



Code	Description
10660634	COTTON DUST SHEET 2.7m x 3.6m
10660601	PLASTIC BACKED DUST SHEET 2.7m x 3.6m



Code	Description
10660637	STOCKINETTE (400g)



Code	Description
10660621	1 TONNE BAG



Code	Description
10660607	25mm x 4.5m RATCHET



Code	Description
10660608	2" RATCHET LORRY TIE DOWN BOX QUANTITY 4



Code	Description
10661617	SMALL TIE DOWN STRAPS



Code	Description
10660540	300mm x 4.8mm CABLE TIE BLACK (100s)
10689167	300mm x 4.8mm CABLE TIE CLEAR (100s)



Code	Description
10660533	48" BUNGEE STRAP WITH HOOK

Our policy of continuous product improvement means that the style/colour or manufacturer of delivered product may differ from that illustrated.

LADDER MAT



Code	Description
10661477	LADDER MAT



Turns
NORMAL
LADDER INTO
A SAFE ROOF
LADDER



Code	Description
10660597	LADDER CLAMP



Code	Description
10660501	LADDER ROOFHOOK



Code	Description
10698836	25M EXTENSION REEL - 2 OUTLET 110V
10660614	25M EXTENSION REEL - 2 OUTLET 240V



Code	Description
10660622	LOCKABLE LADDER CLAMP

Code	Description
10661474	4" 500 GAUGE LAYFLAT TUBING FOR TEMPORARY DOWNPIPE (4 KILO ROLL)
10661475	5" 500 GAUGE LAYFLAT TUBING FOR TEMPORARY DOWNPIPE (5 KILO ROLL)
10661476	6" 500 GAUGE LAYFLAT TUBING FOR TEMPORARY DOWNPIPE (6 KILO ROLL)



USE WITH
JUBILEE
MULTIBAND
SEE PAGE 9

Our policy of continuous product improvement means that the style/colour or manufacturer of delivered product may differ from that illustrated.



Code	Description
10660546	MOSS & MOULD REMOVER 5L
10060547	MORTAR ADMIXTURE 5L
10660561	FROST PROOFER & ACCELERATOR



Code	Description
10661385	ROOFER BITUMEN REMOVER 1000ml



Code	Description
10661526	PU TILE ADHESIVE BOX QUANTITY 12



Code	Description
10661382	WEATHER MATE SEALANT BOX QUANTITY 25



Code	Description
10661365	LEAD MATE SEALANT



Code	Description
10270384	TECNIC FOIL GUN FOR 600ml CARTRIDGE

Code	Description
10661383	MASTIC/SKELETON GUN BOX QUANTITY 24



Code	Description
10661384	POWER PLUS MASTIC GUN BOX QUANTITY 6



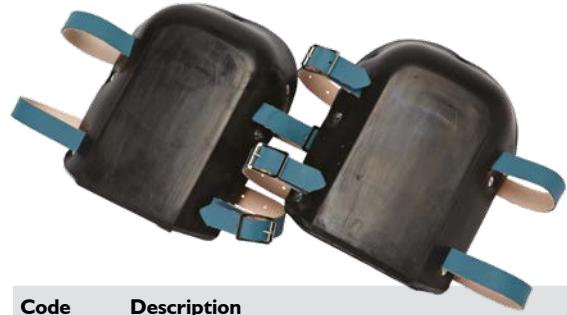
Code	Description
10660640	SURVEY SPRAY PAINT



Our policy of continuous product improvement means that the style/colour or manufacturer of delivered product may differ from that illustrated.



Code	Description
10660311	ROOFER KNEEPAD LEATHER/RUBBER



Code	Description
10660314	MINERS KNEEPADS



Code	Description
10661478	ROOFER KNEEPAD RUBBER/RUBBER



Code	Description
10660316	ROOFER ASPHALTER KNEEPAD



Code	Description
10660310	VITREX MINI GEL
10660317	PREMIUM GEL FILLED KNEE PADS



Code	Description
10660308	KNEEPAD SPARE STRAP
10660309	LEATHER QUALITY SPARE KNEEPAD STRAP



Code	Description
10660312	LEATHER BELT



Code	Description
10660313	HAMMER LOOP – STEEL

Our policy of continuous product improvement means that the style/colour or manufacturer of delivered product may differ from that illustrated.



Code	Description
10660319	CORDURA POUCH FRONT TO FRONT
10660318	CORDURA POUCH D/COMB



Code	Description
10661613	LEATHER NAIL & TOOL POUCH
10660315	LEATHER NAIL POCKET D/COMB STANDARD



Code	Description
10661480	ROOFER NAIL POUCH – KANGAROO
10698956	OIL TAN NAIL POUCH



Code	Description
10693711	PREMIER F/F OIL TAN NAIL POUCH & BELT
10693709	PREMIER DOUBLE COMBI C/W BELT

NEW PREMIUM GLOVE RANGE



Code	Description
10698015	VIPER HEAVY DUTY GRIP GLOVE – RED BAG QUANTITY 12



Code	Description
10698017	WATERTITE THERMAL GRIP GLOVE – ORANGE BAG QUANTITY 12



Code	Description
10698019	WATERTITE LAYTEX GRIP GLOVE – BLUE BAG QUANTITY 12



Code	Description
10698021	THERMOTITE NITRILE GRIPPER GLOVE – BLACK BAG QUANTITY 12

Our policy of continuous product improvement means that the style/colour or manufacturer of delivered product may differ from that illustrated.



Code	Description
10660294	PVC KNITTED WRIST GLOVES
10660296	GRIPPER GLOVES OPEN BACK
	BAG QUANTITY 10



Code	Description
10660297	THERMAL GLOVES
10660298	ROOFER SKIN GLOVES
	BAG QUANTITY 10



Code	Description
10660560	FLO HIGH GLOW WAIST COAT (XL)
10661481	PVC RAINSUIT



Code	Description
10660420	GP GOGGLES
10660422	SAFETY GLASSES



Code	Description
10660423	SAFETY HELMET BLUE
10698835	SAFETY HELMET YELLOW



Code	Description
10660421	EAR DEFENDER



Code	Description
10660645	100 WIPES PER TUB



Code	Description
10681344	FFP3 RESPIRATOR



Code	Description
10661479	24" TOOLBAG



Code	Description
10660293	SURETOUCH GLOVES 100 PER BOX

Our policy of continuous product improvement means that the style/colour or manufacturer of delivered product may differ from that illustrated.

RECYCLED RUBBER GRANULAR PROMENADE TILES



Code	Description
10661523	FLEXIBLE RUBBER TILE – BLACK 1000 x 1000mm
10661525	FLEXIBLE RUBBER TILE – GREEN 1000 x 1000mm

SPECIFICATION

Granular rubber tiles designed for installation on roof terrace, balconys, patios and walkways, they are free draining and manufactured to exacting standards using top quality SBR granular rubber combined with polymer binders to provide an attractive anti slip protective surface.

MAINTENANCE

All tiles should be cleaned on a regular basis. All tiles contain Carbon Black which may leach and rise to the tile surface and over time fading the green tiles.

Code	Size	Weight	Colours	Fixing	Flammability
1000mm Tile	1000 x 1000 x 25mm	17.25kg m ²	Black/Green	Bonded to substrate using 5mm expansion spacing	Conforms to BS 7188:1998

Code	Description
10661526	PUREFLEX TILE ADHESIVE
GRANSPACER	TILE SPACER – 5mm



GRANSPACER

10661526

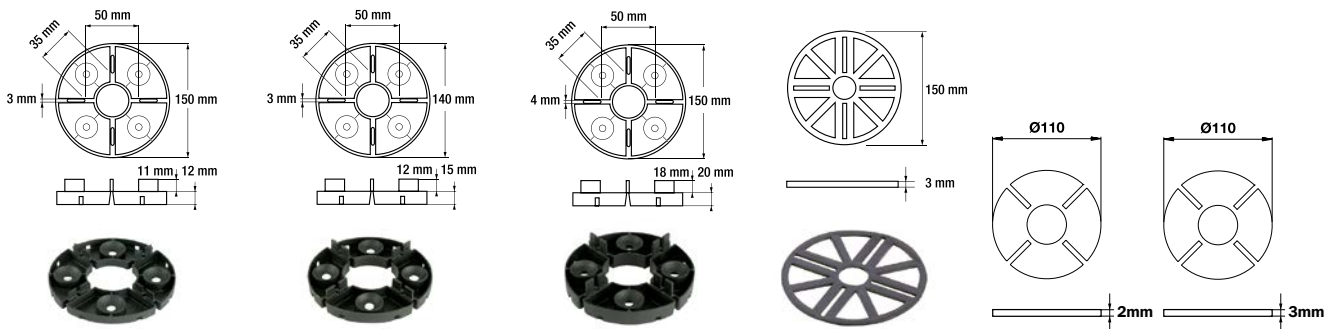
Our policy of continuous product improvement means that the style/colour or manufacturer of delivered product may differ from that illustrated.

PAVING SUPPORTS WITH FIXED HEIGHT

Paver support with non-adjustable, fixed height.

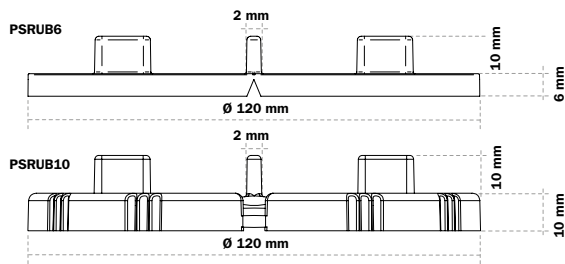
ADVANTAGES:

- Quick and cheap solution.
- Three sizes (12mm, 15mm, 20mm).
- Can be placed on top or under the support.
- I0661485 and I0661486 Levelling discs – available in 2mm and 3mm.



I0661482	I0660605	I0661483	I0661484	I0661485	I0661486
PS20	PS15	PS20 SPEC	PS20LEV shim	LGH2	LGH3

NEW RUBBER FIXED HEIGHT PAVING SUPPORT



Code	Description
I0661487	RUBBER FIXED HEIGHT PAVING SUPPORT 6mm
I0661488	RUBBER FIXED HEIGHT PAVING SUPPORT 10mm



Our policy of continuous product improvement means that the style/colour or manufacturer of delivered product may differ from that illustrated.

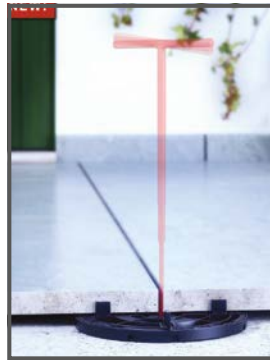
STAR.T PAVING SUPPORT

eternoivica

Adjustable support for exact levelling adjustments from 10mm - 30mm.

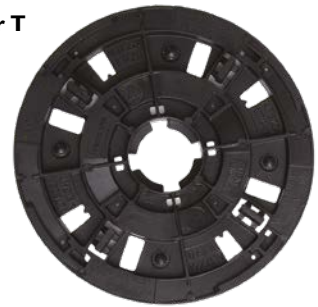
ADVANTAGES:

- **Enables exact level paving** - 10mm adjustable up to 30mm.
- **Strong composition** - formed from high quality moulded plastic for strength.
- **Highly flexible** - suitable for raising any type of ceramic, concrete or composite material floor of any size and weight.
- **Quick installation** - for a precise finish.
- **Easy stacking** - various depths for exact heights (10mm + 5mm).

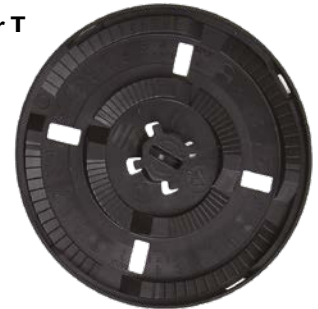


10 15
STAR.T

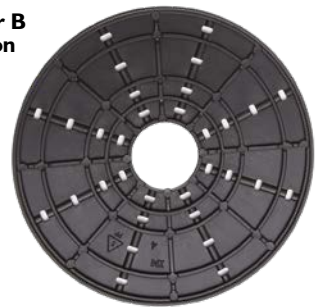
NM Star T
Top



NM Star T
Base



NM Star B
Extension



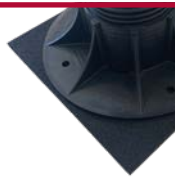
Code	Description
10661489	ADJUSTABLE PAVING SUPPORT TOP & BASE 10-15mm
10661490	5mm EXTENSION FOR STAR SUPPORT

NMSTART	NMSTARB	Achievable Height
1	-	10-15mm
1	1	15-20mm
1	2	20-25mm
1	3	25-30mm

SOUND SUPPRESSION PAD

210x210x6mm

10698822



Our policy of continuous product improvement means that the style/colour or manufacturer of delivered product may differ from that illustrated.

PAVING AND DECKING SUPPORTS AND WALKWAY TILES

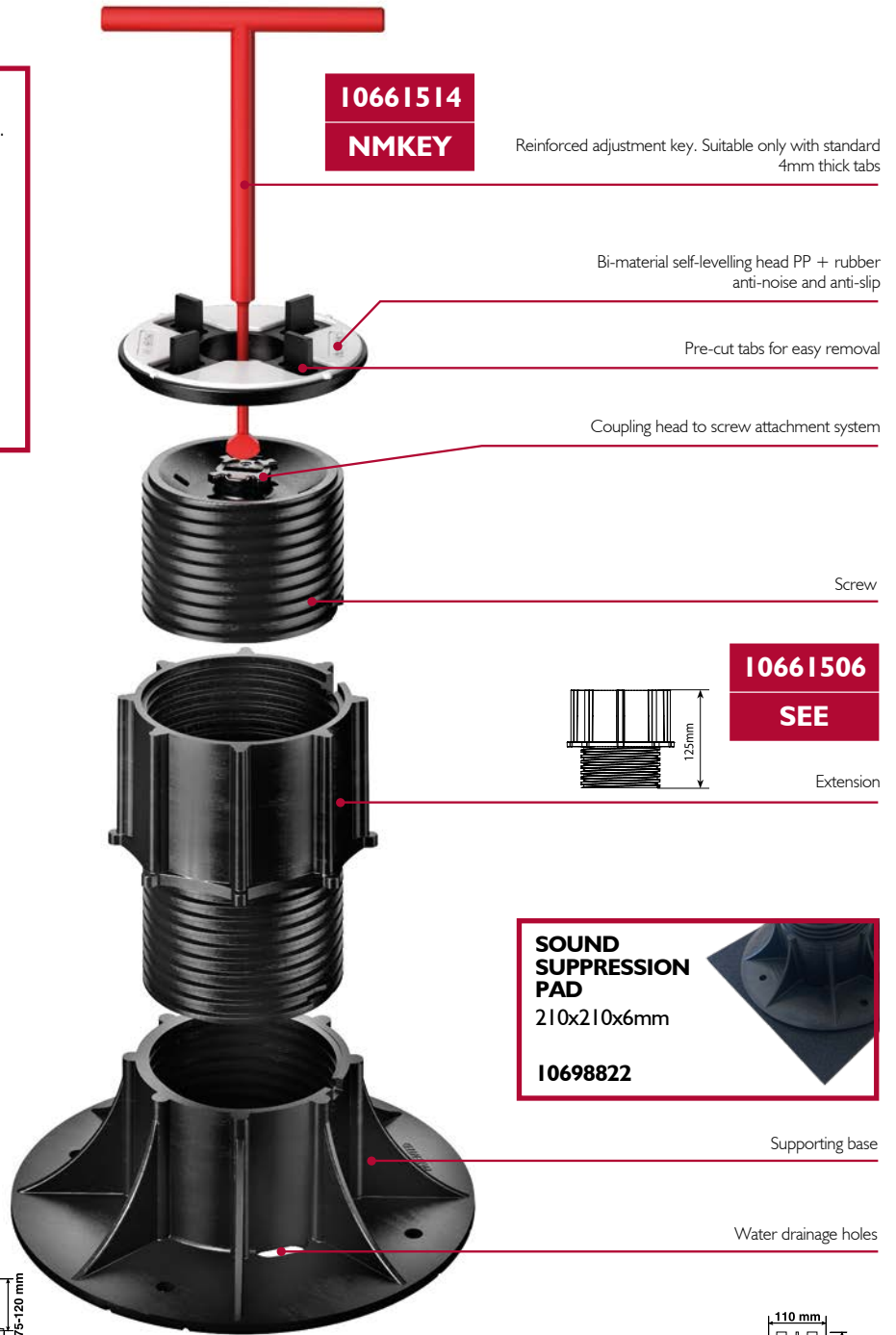
'SE' SELF-LEVELLING ADJUSTABLE WITH BI-MATERIAL HEAD

eternoivica

An adjustable self-levelling paving support.

ADVANTAGES:

- Integrated system that automatically accommodates roofing slopes to 5% variance.
- Adjustable heights from 28 – 550mm.
- Resistant to temperatures between -40°C to 120°C.
- Smooth support base of 205mm diameter.
- Easily removable tabs.
- Anti-noise and anti-slip bi-material head.
- Suitable for any self-supporting outdoor paving system.
- Fully recyclable.



SE0 SE1 SE2 SE3
SE4 SE5
supplied 25 per box

I0661491	I0661492	I0661493	I0661494	I0661495	I0661496	I0661497	I0661498	I0661499	I0661500	I0661501	I0661502	I0661503	I0661504	I0661505
SE 0	SE 1	SE 2	SE 3	SE 4	SE 5	SE 6	SE 7	SE 8	SE 9	SE 10	SE 11	SE 12	SE 13	SE 14

Our policy of continuous product improvement means that the style/colour or manufacturer of delivered product may differ from that illustrated.

'NM' FIXED HEAD ADJUSTABLE PAVING SUPPORT WITH BI-MATERIAL HEAD

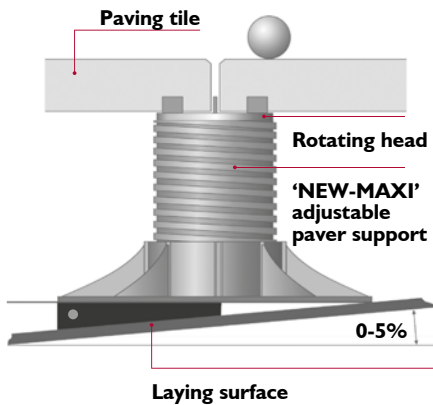
eternoivica

An adjustable system enabling floor height adjustment after fitting.

Can be used in conjunction with any outdoor flooring.

ADVANTAGES:

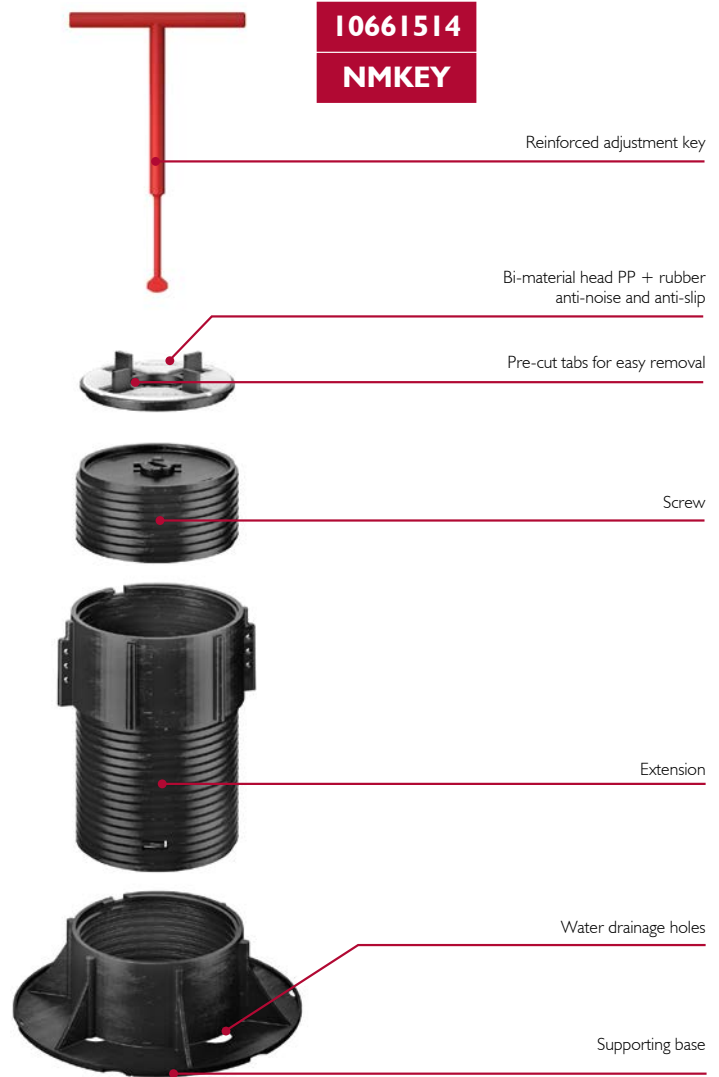
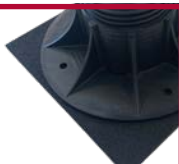
- **Precision adjustment** from 25 to 935mm.
- **Easy adjustment** - refine the height once the floor is laid with exclusive adjustment key.
- **Noise-reducing** anti-slip rubber.
- **Smooth support** base of 320cm².
- **Long-lasting** - resistant to weathering, acids, UV rays and wear and tear.
- **Highly durable** - resistant to temperatures between -40° to 120°C.
- **Fully recyclable.**
- **Quick to fit** - easily removable tabs.



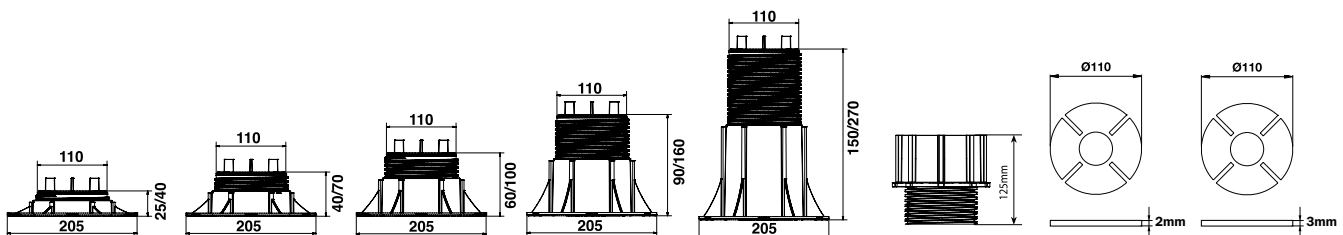
SOUND SUPPRESSION PAD

210x210x6mm

10698822



Code		Height Min-Max	Height +1 10661512	Height +2 10661512	Height +3 10661512	Height +4 10661512	Height +5 10661512
10661507	NM 1	25-40	-	-	-	-	-
10661508	NM 2	40-70	-	-	-	-	-
10661509	NM 3	60-100	165-200	275-365	385-500	495-635	605-770
10661510	NM 4	90-160	195-280	305-415	415-550	525-685	635-820
10661511	NM 5	150-270	300-390	410-530	520-665	630-800	740-935



10661507	10661508	10661509	10661510	10661511	10661512	10661485	10661486
NM1	NM2	NM3	NM4	NM5	NME	LGH2	LGH3

Our policy of continuous product improvement means that the style/colour or manufacturer of delivered product may differ from that illustrated.

PEDESTAL PRIME®

eternoivica

Simple and strong, designed for time saving installation.

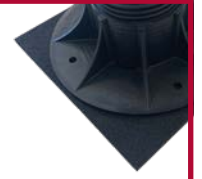
ADVANTAGES:

- **Time saving, one of a kind pre-cut base** - PATENTED base design significantly reduces installation and laying time.
- **Integrated extension** so no need for additional rings, tubes or extensions.
- **Three simple sizes** for heights from 30mm to 420mm.
- **Extensions available** for heights over 420mm extensions to get to 595mm, 770mm and 945mm.
- **Self-levelling head** adjusting for slopes from 0-5%.
- **Adjustable height** using patented key.
- **Safety locks integrated** for heights above 420mm into the lower and upper fittings.
- **Full Pedestal guarantee** by Eterno Ivica.
- **Fully recyclable.**

SOUND SUPPRESSION PAD

210x210x6mm

10698822



3 Pedestal Prime models

10698818: from 30 to 65 mm

10698819: from 65 to 155 mm

10698820: from 155 to 420 mm



Code	Height Min-Max
10698818 + head	30mm to 65mm
10698819 + head	65mm to 155mm
10698820 + head	155mm to 420mm
PR-HEAD	Self levelling head for paving
PR-DECK-HEAD	Self levelling head for decking
10698821	Extension
10698820 + 1 10698821	315mm to 595mm
10698820 + 2 10698821	415mm to 770mm
10698820 + 3 10698821	520mm to 945mm

10698818
10698819
supplied
25 per box

10698820
supplied
12 per box

10698821
supplied
12 per box



Our policy of continuous product improvement means that the style/colour or manufacturer of delivered product may differ from that illustrated.

Class A1 Fire Rated.

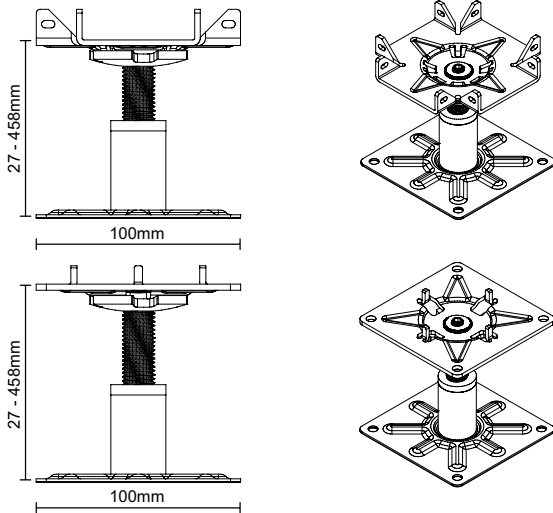
Commercial use Paving Pedestals: Non-combustible, fully adjustable, Class A1 pedestal commercial grade high-rise balconies, terraces and flat roofs.

ADVANTAGES:

- **Non-combustible** to BS EN 13501-1 Fire classification of construction products & building elements.
- **Suitable for interior and exterior** applications and suspended paving.
- **A1 galvanised steel.** 100% metallic - no plastic or rubber components.
- Only product providing **both tilting/self-levelling** and fixed head options to ensure completely flat surface.
- **Ultimate flexibility** 360° tilting crisscross head for aluminium joist and decking options.
- **Precision heights** - from 28mm up to 458mm.

Key Features

- Easy-to-bend tabs
- Fixed head with tabs for tiles
- 180° and 360° tilting head with tabs for tiles
- Fixed head for decking
- 180° and 360° tilting head for decking
- Fixed and 180° tilting crisscross head for aluminium joist
- 180° tilting crisscross head for aluminium joist
- Complies fully with British Standard BS 8579



Code	Description	Height Min-Max	Box Qty
I0698799	SUPPORT	27-35mm	50
I0698805	SUPPORT HEAD FOR JOISTS	27-35mm	50
I0698806	SUPPORT	34-46mm	50
I0698807	SUPPORT HEAD FOR JOISTS	34-46mm	50
I0698808	SUPPORT	44-62mm	25
I0698809	SUPPORT HEAD FOR JOISTS	44-62mm	25
I0698810	SUPPORT	61-97mm	25
I0698811	SUPPORT HEAD FOR JOISTS	61-97mm	25
I0698812	SUPPORT	95-165mm	25
I0698813	SUPPORT HEAD FOR JOISTS	95-165mm	25
I0698814	SUPPORT	163-300mm	20
I0698815	SUPPORT HEAD FOR JOISTS	163-300mm	20
I0698816	SUPPORT	298-458mm	10
I0698817	SUPPORT HEAD FOR JOISTS	298-458mm	10



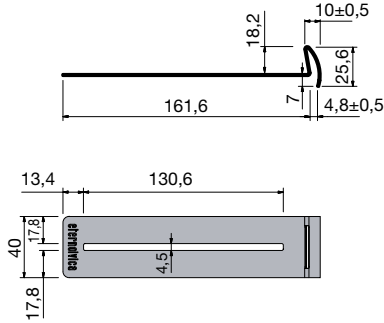
Our policy of continuous product improvement means that the style/colour or manufacturer of delivered product may differ from that illustrated.

UNIVERSAL EDGE CLIP

eternoivica

The perfect join, attractive and functional.

The universal edge clip for stability around a perimeter wall. The stainless steel clip stabilizes the pavers whether situated on whole or part (cut) pedestals. A polypropylene alternative is also available.



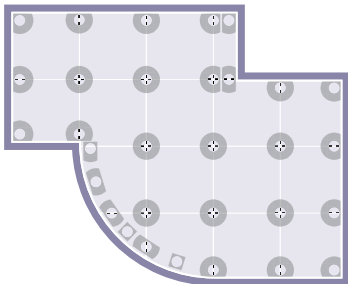
I0698798
PSCLIPPP

I0661513
PSCLIP

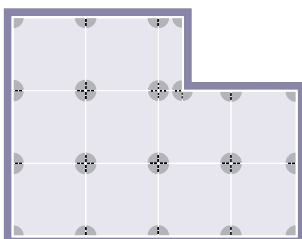


I0661514
NMKEY

Adjustable support installation



Fixed height support installation



For pavers or tiles that are larger than 500x500mm, it is recommended that an extra paving support (with flat head) should be placed in the centre of the tile.

CONSUMPTION PER m²

Tile size	Supports per m ²
30 x 30cm	11,2
30 x 35cm	9,5
30 x 40cm	8,3
40 x 40cm	6,25
45 x 45cm	5
50 x 50cm	4
60 x 60cm	2,8

Our policy of continuous product improvement means that the style/colour or manufacturer of delivered product may differ from that illustrated.

Innovative finishing to eliminate edging gaps and horizontal movement.

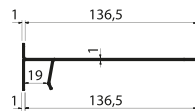
ADVANTAGES:

- **Wide ranges** - available in 20mm, 30mm or 40mm to suit tile widths.
- **Discrete** - concealed clip does not interfere with the finish.
- **Strong** - 100% stainless steel.
- **Flexible** - allows natural slab expansion movement.
- **Supporting** - wide wall support surface, spreads the slab pressure evenly.
- **Compatible** - works with the whole Pedestal range.



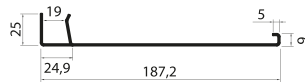
10661515

PSCLIPUV



10661516

PSCLIPLC



Clips for 30mm and 40mm tiles are available to order



Our policy of continuous product improvement means that the style/colour or manufacturer of delivered product may differ from that illustrated.

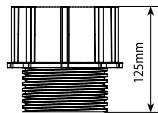
'DS' DECKING SUPPORTS

The universal head is designed for all fastening needs and joist types. The slots on the head enable coupling of the joists from 18mm high.

The universal head is designed to accommodate and permit the fastening of all types of existing joists on the market. The slots on the head enable coupling of the joists from 18mm high.



10661512
NME



DS1 DS2
DS3 DS4 DS5
supplied
20 per box

Code	Size	Code	Height Min-Max	Height +1 10661512	Height +2 10661512	Height +3 10661512	Height +4 10661512	Height +5 10661512
10661517	DS1 25-40mm	10661517	DS1 25-40	-	-	-	-	-
10661518	DS2 40-70mm	10661518	DS2 40-70	-	-	-	-	-
10661519	DS3 60-100mm	10661519	DS3 60-100	165-200	275-365	385-500	495-635	605-770
10661520	DS4 90-160mm	10661520	DS4 90-160	195-280	305-415	415-550	525-685	635-820
10661521	DS5 150-270mm	10661521	DS5 150-270	300-390	410-530	520-665	630-800	740-935



SOUND SUPPRESSION PAD
210x210x6mm
10698822

Our policy of continuous product improvement means that the style/colour or manufacturer of delivered product may differ from that illustrated.



SIG Roofing, Harding Way, St Ives,
Cambridgeshire PE27 3YJ
Tel: 01480 466777
Email: info@sigroofing.co.uk
Websites: www.sigroofing.co.uk

This brochure has been produced by the Marketing Department for SIG Roofing. All rights reserved. No copying by any means is permitted, except when permission is given in writing by SIG Roofing.

This brochure contains manufacturers' product information that is reproduced by SIG Roofing in good faith, based on the latest knowledge available at the time of going to print. Whilst every effort has been made to ensure that the information is current and correct, as distributors SIG Roofing cannot accept responsibility for the application and specification data featured. Neither can we accept responsibility where the manufacturers' instructions have not been followed. We reserve the right to amend, withdraw or substitute these products at any time. Visuals are for illustration purposes only, please go to manufacturers websites for technical specifications.